

**pavatex**  
by SOPREMA



**MULTIFUNCTIONAL**  
INSULATION

# PAVATEX PRODUCT PACK



**SOPREMA**  
GROUP

# PAVATEX BY SOPREMA

## **BUILDING SUSTAINABLE HOMES WITH PAVATEX INSULATION FROM SOPREMA**

PAVATEX has been successfully used on thousands of UK-based projects. Our range of solutions are tried, tested and trusted by house builders, commercial developers, housing associations and local authorities.

Our specification support helps you ensure the right product specification on a given building type. PAVATEX solutions provide thermal, moisture, acoustic and overheating control.



### **THERMAL PERFORMANCE**

Good thermal performance is now prerequisite to any new build or renovation. However, breathability and overheating control **must** also be considered simultaneously to protect the integrity of the building fabric and ensure that significant problems are not created.



### **BREATHABILITY**

Over 11½ litres of moisture are produced internally by the average household each day. The external shell of a building is much like a coat, it needs to keep the rain off, but like a **GORE-TEX®** jacket, it must not allow moisture, produced internally, to get trapped within the building fabric. It must let it out. **Pavatex®** is the **GORE-TEX®** of buildings.



### **OVERHEATING**

Low level heat is needed to raise the internal temperature in winter. Insulation keeps this heat in. The sun produces high level heat which can lead to overheating in the summer. Conventional insulation, in structures such as roofs and timber frame buildings, can't keep high level heat out. **Pavatex®** has thermal mass which 'soaks up' the heat from the sun helping to prevent summertime overheating.

# PAVATEX SHEETS

## PRODUCT SHEETS




- |   |                          |    |                                |
|---|--------------------------|----|--------------------------------|
| 6 | <b>Pavatex Woodfibre</b> | 10 | <b>Membranes</b>               |
| 6 | Isolair Multi Multi      | 12 | <b>Pavatex Tapes and Seals</b> |
| 6 | Pavadry                  |    |                                |
| 7 | Pavatherm                |    |                                |
| 7 | Reveal Board             |    |                                |
| 8 | Pavaflex                 |    |                                |
| 9 | Pavatextil P             |    |                                |

## SYSTEM SHEETS

- |    |                                  |    |                                |
|----|----------------------------------|----|--------------------------------|
| 16 | <b>New Build</b>                 | 30 | <b>Retrofit</b>                |
| 16 | External Timber Frame Clad       | 30 | IMI* Lime Plastered Finish     |
| 18 | External Timber Frame Brick Clad | 32 | IMI* Dry Lined                 |
| 20 | External Timber Frame Render     | 34 | EWI** Rendered                 |
| 22 | Cross Laminated Timber Render    | 36 | EWI** Clad                     |
| 24 | Cross Laminated Timber Clad      | 38 | Internally Fitted Pitched Roof |
| 26 | Pitched Roof                     | 40 | Externally Fitted Pitched Roof |
| 28 | Flat Roof                        |    |                                |

\* IMI - Internal Wall Insulation  
 \*\*EWI - External Wall Insulation

## ICON OVERVIEW

-  sides of the panel
-  Application
-  good for plaster



# PRODUCT SHEETS

# PAVATEX WOODFIBRE

## ISOLAIR MULTI



**Application** **Roof:** over or under rafter  
**Wall:** on the studs or existing masonry

**Finishes** Clad or tile, can be brick clad. Plaster or Render

**Fixed** Mechanical Fixings



Please refer to the product data sheet for all information including technical details, finishes, installation and storage.

Article Number	Thickness (mm)	Edge	Dimensions (net) mm	Pallet (m <sup>2</sup> ) (net)	Dimensions (mm)	Pallet (m <sup>2</sup> )	Boards/Pallet	Pallet (kg)	Density (kg/m <sup>3</sup> )	λ	Thermal resistance (Rd)[m <sup>2</sup> .K/W]
230822	30	T&G	1860 x 590	81,2	1880 x 610	84,9	74	509	200	0,044	0,65
230827	35	T&G	1860 x 590	70,2	1880 x 610	73,4	64	514	200	0,044	0,75
230833	40	T&G	1860 x 590	61,5	1880 x 610	64,2	56	424	165	0,043	0,90
230836	52	T&G	1860 x 590	43,9	1880 x 610	45,9	40	394	165	0,043	1,20
230845	60	T&G	1860 x 590	39,5	1880 x 610	41,3	36	409	165	0,043	1,35
230854	80	T&G	1860 x 590	30,7	1880 x 610	32,1	28	424	165	0,043	1,85
230857	100	T&G	1860 x 590	24,1	1880 x 610	25,2	22	366	145	0,041	2,40
230860	120	T&G	1860 x 590	19,8	1880 x 610	20,6	18	359	145	0,041	2,90
230861	140	T&G	1860 x 590	17,6	1880 x 610	18,3	16	372	145	0,041	3,40
230862	160	T&G	1860 x 590	15,4	1880 x 610	16,1	14	372	145	0,041	3,90
230864	180	T&G	1860 x 590	13,2	1880 x 610	13,8	12	359	145	0,041	4,35
230870	200	T&G	1860 x 590	11,0	1880 x 610	11,5	10	333	145	0,041	4,85



## PAVADRY



**Application** **Wall:** masonry, masonry filled timber (internal)

**Finishes** Standard plaster board

**Fixed** Mechanical fixings & bonding plaster



Please refer to the product data sheet for all information including technical details, finishes, installation and storage.

Article Number	Thickness (mm)	Edge	Dimensions (mm)	Pallet (m <sup>2</sup> )	Boards/Pallet	Pallet (kg)	Density (kg/m <sup>3</sup> )	λ	Thermal resistance (Rd)[m <sup>2</sup> .K/W]
157715	51 (40+11)	Straight	1200 x 600	30,9	42	384	145	0,041	1,05
157717	71 (60+11)	Straight	1200 x 600	23,0	32	353	145	0,041	1,50
157718	91 (80+11)	Straight	1200 x 600	17,2	24	315	145	0,041	2,00

## PAVATHERM STANDARD



**Application** **Roof:** over or under rafter with a base (ply/OSB) or on CLT  
**Wall:** on to studs with a base or existing masonry or on CLT  
**Floor:** between or under joists with a base

**Finishes** Subject to primary boards and Application

**Fixed** Subject to primary boards and Application



Please refer to the product data sheet for all information including technical details, finishes, installation and storage.

Article Number	Thickness (mm)	Edge	Dimensions (net) mm	Pallet (m <sup>2</sup> ) (net)	Dimensions (mm)	Pallet (m <sup>2</sup> )	Boards/Pallet	Pallet (kg)	Density (kg/m <sup>3</sup> )	λ	Thermal resistance (Rd)[m <sup>2</sup> .K/W]
107686	40	Straight	1100 x 600	73,9	1100 x 600	73,9	112	360	110	0,038	1,05
107687	60	Straight	1100 x 600	47,5	1100 x 600	47,5	72	348	110	0,038	1,55
107688	80	Straight	1100 x 600	37,0	1100 x 600	37,0	56	360	110	0,038	2,10
107680	100	Straight	1100 x 600	29,0	1100 x 600	29,0	44	354	110	0,038	2,60
107681	120	Straight	1100 x 600	23,8	1100 x 600	23,8	36	348	110	0,038	3,15
107682	140	Rebate	1085 x 585	20,3	1100 x 600	21,1	32	404	110	0,038	3,65
107683	160	Rebate	1085 x 585	17,8	1100 x 600	18,5	28	404	110	0,038	4,20
107684	180	Rebate	1085 x 585	15,2	1100 x 600	15,8	24	391	110	0,038	4,70
107685	200	Rebate	1085 x 585	12,7	1100 x 600	13,2	20	363	110	0,038	5,25
107692	220	Rebate	1085 x 585	12,7	1100 x 600	13,2	20	398	110	0,038	5,75
108485	240	Rebate	1085 x 585	9,8	1100 x 600	10,6	16	349	110	0,038	6,30



## REVEAL BOARD



**Application** **Wall:** on to studs or existing masonry or on CLT frame

**Finishes** Render/Clad or subject to Application

**Fixed** According to Application



Please refer to the product data sheet for all information including technical details, finishes, installation and storage.

Article Number	Thickness (mm)	Edge	Dimensions (mm)	Pallet (m <sup>2</sup> )	Boards/Pallet	Pallet (kg)	Density (kg/m <sup>3</sup> )	λ	Thermal resistance (Rd)[m <sup>2</sup> .K/W]
152641	30	Straight	1100 x 600	97,7	148	454	155	0,043	0,65
152642	40	Straight	1100 x 600	73,9	112	458	155	0,043	0,90



# PAVATEX WOODFIBRE

## PAVAFLEX



**Application**  
**Roof:** between rafter  
**Wall:** between studs  
**Floor:** between joists

**Finishes** N/A

**Fixed** Subject to Application



Please refer to the product data sheet for all information including technical details, finishes, installation and storage.

Article Number	Thickness (mm)	Edge	Dimensions (mm)	Pallet (m <sup>2</sup> )	Boards/ Pallet	Pallet (kg)	Density (kg/m <sup>3</sup> )	λ	Thermal resistance (Rd)[m <sup>2</sup> .K/W]
157239	40 (only in UK)	Straight	1220 x 375	82,4	180	195	50	0,038	1,05
112962	40	Straight	1220 x 575	84,2	120	183	50	0,038	1,05
112963	50	Straight	1220 x 575	63,1	90	173	50	0,038	1,30
157240	60 (only in UK)	Straight	1220 x 375	54,9	120	195	50	0,038	1,55
112964	60	Straight	1220 x 575	56,1	80	183	50	0,038	1,55
112965	80	Straight	1220 x 575	42,1	60	183	50	0,038	2,10
112966	100	Straight	1220 x 575	33,7	48	183	50	0,038	2,60
112967	120	Straight	1220 x 575	28,1	40	183	50	0,038	3,15
112968	140	Straight	1220 x 575	22,4	32	172	50	0,038	3,65
112969	160	Straight	1220 x 575	21,0	30	183	50	0,038	4,20
112970	180	Straight	1220 x 575	16,8	24	167	50	0,038	4,70
112971	200	Straight	1220 x 575	16,8	24	183	50	0,038	5,25
112972	220	Straight	1220 x 575	14,0	20	169	50	0,038	5,75
112973	240	Straight	1220 x 575	14,0	20	183	50	0,038	6,30



NEW!

**PAVATEXIL P** is a soft thermo-acoustic insulation board based on cotton fibres (85%), originating from recycled textile (jeans and velvet), and polyester fibres (15%).

The cotton fibres have hygroscopic properties and have been subjected to anti-bacterial, fungal and flame retardant treatments, making them resistant to dust mites and mold.

**PAVATEXIL P** is mainly installed between the timber or metal framework, on walls and sloped roofs. It can also be used in loft floors.

- + Good insulating capacity against thermal losses in winter and heat transmittance in the summer
- + Vapour-open
- + Possesses outstanding sound-insulation properties

## PAVATEXIL P



**Application**  
**Roof:** between rafter  
**Wall:** between studs  
**Floors:** loft

**Finishes** N/A

**Fixed** Subject to Application



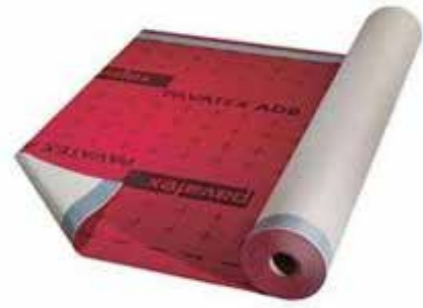
Please refer to the product data sheet for all information including technical details, finishes, installation and storage.

Article Number	Thickness (mm)	Edge	Dimensions (mm)	Pallet (m <sup>2</sup> )	Boards/ Pallet	Density (kg/m <sup>3</sup> )	λ	Thermal resistance (Rd)[m <sup>2</sup> .K/W]
152322	45	Straight	1200 x 600	74,88	104	± 20	0,039	1,15
152324	60	Straight	1200 x 600	57,60	80	± 20	0,039	1,50
152325	80	Straight	1200 x 600	40,32	56	± 20	0,039	2,05
152326	100	Straight	1200 x 600	34,56	48	± 20	0,039	2,55
152327	120	Straight	1200 x 600	28,80	40	± 20	0,039	3,05
152328	145	Straight	1200 x 600	23,04	32	± 20	0,039	3,70
152329	160	Straight	1200 x 600	17,28	24	± 20	0,039	4,10
152362	180	Straight	1200 x 600	17,28	24	± 20	0,039	4,60
152363	200	Straight	1200 x 600	17,28	24	± 20	0,039	5,10

# MEMBRANES

Please refer to the product data sheet for all information including technical details, finishes, installation and storage.

## PAVATEX ADB



A three-layer polypropene vapour permeable sarking membrane with integrated self-adhesive strips

**Application** Used for sealing of longitudinal joints

**Article Number** 111137

Roll Width - m	Roll Length - m	Roll Area - m <sup>2</sup>	Roll mass - kg
1,5	50	75	14

## PAVATEX DB 3.5



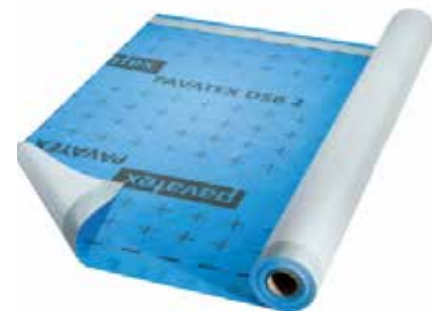
An airtight vapour control membrane

**Application** Open roof and wall constructions

**Article Number** 107631

Roll Width - m	Roll Length - m	Roll Area - m <sup>2</sup>	Roll mass - kg
1,5	50	75	9

## PAVATEX DSB 2



An airtight vapour control and airtight membrane

**Application** Used on roof sheathing for over-rafter insulation with PAVATEX soft wood fibre boards

**Article Number** 107632

Roll Width - m	Roll Length - m	Roll Area - m <sup>2</sup>	Roll mass - kg
1,5	50	75	13

## PAVATEX LDB 0.02



A second fit airtightness layer

**Application** Used when recovering the roof while retaining and/or extending the existing between-rafter insulation with PAVAFLEX

**Article Number** 107634

Roll Width - m	Roll Length - m	Roll Area - m <sup>2</sup>	Roll mass - kg
1,5	50	75	13

## SOPRAVAP HYGRO MEMBRANE



An airtight vapour control membrane with variable water vapour diffusion resistance

**Application** Used for walls and roofs

**Article Number** 114175

Roll Width - m	Roll Length - m	Roll Area - m <sup>2</sup>	Roll mass - kg
1,5	50	75	8,5

## SOPLUTEC UV



A watertight breathable membrane

**Application** Used as an insulation protection in an exterior cladding system on framing with open joints

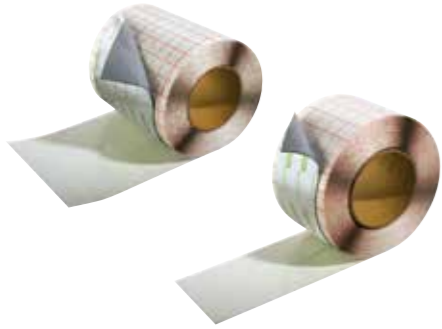
**Article Number** 108195

Roll Width - m	Roll Length - m	Roll Area - m <sup>2</sup>	Roll mass - kg
1,5	50	75	12

# TAPES & SEALS

Please refer to the product data sheet for all information including technical details, finishes, installation and storage.

## PAVATAPE: 75/150



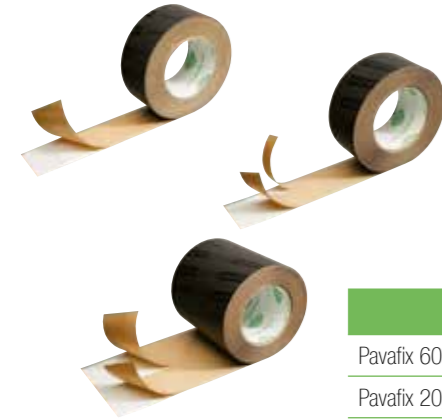
A butyl rubber tape

**Application** Used for waterproof, weatherproof and UV-resistant sealing of board joints, connections and penetrations in PAVATEX insulation and sarking systems

**Article Number** 154761 for 150 - 154758 for 75  
comes in 2 different pallet sizes - ask for details

	Roll Length - m	Roll Width - mm	Box contents - units
Pavatape 75	20	75	8
Pavatape 150	20	150	4

## PAVAFIX 60/20-40/150



An all-round acrylate adhesive tape

**Application** Used for permanent sealing of PAVATEX membranes and wood fibre boards indoors and outdoors

**Article Number** 107582 for 60 - 107581 for 20-40 - 107580 for 150

	Box mass - kg	Roll Length - m	Roll Width - mm	Box contents - units
Pavafix 60	2,8	25	60	4
Pavafix 20_40	2,8	25	60	4
Pavafix 150	3,2	25	150	2

## PAVATAPE FLEX



Stretchable butyl rubber tape

**Application** Used for easy sealing of PAVATEX boards and membranes, indoors and outdoors, at penetrations such as rafters, purlins, vent pipes etc

**Article Number** 154757

	Box mass - kg	Roll Length - m	Roll Width - mm	Box contents - units
Pavatape flex	10,8	5	80	8

## PAVATAPE 12



Double-sided butyl rubber tape

**Application** Suitable for connecting all types of vapour control membranes according to SIA 180 and DIN 4108-7

**Article Number** 107622 - 10000 x 1.2 mm  
154754 - 10000 x 12 mm

	Box mass - kg	Roll Length - m	Roll Width - mm	Box contents - units
Pavatape 12	2,0	10	12	3

## PAVAFIX SN BAND



Screw and nail sealing tape

**Application** Used for PAVATEX ADB, it prevents the ingress of moisture at nails or screws in the area of counter-battens

**Article Number** 111100 for 63 m

	Box mass - kg	Roll Length - m	Roll Width - mm	Box contents - units
Pavafix SN band	2,4	30	63	8

## PAVAPRIM



Solvent-free primer with high self-adhesive strength

**Application** Used as a primer for PAVATAPE and PAVAFIX 60 on PAVATEX wood fibre boards and other porous and mineral construction materials

**Article Number** 107618

	Contents per container - ml	Box contents - units
Bottle	1000	6

## PAVACOLL



Adhesive for sealing PAVATEX boards and membranes

**Application** Used for waterproof and weatherproof gluing of PAVATEX insulation and sarking systems, for waterproof and airtight gluing of overlaps and connections of PAVATEX membranes

**Article Number** 115129 - Cartridge - 310/470  
107576 - Tubular Bag - 600/900

	Contents per container - ml/g	Box contents - units	Accessories included
Cartridge	310/470	12	12 detachable nozzles
Tubular bag	600/900	10	10 large conical nozzles

## PAVABOND



Universal adhesive for PAVATEX membranes

**Application** Used for creating airtight connections of vapour control and airtight membranes on dry and clean substrates

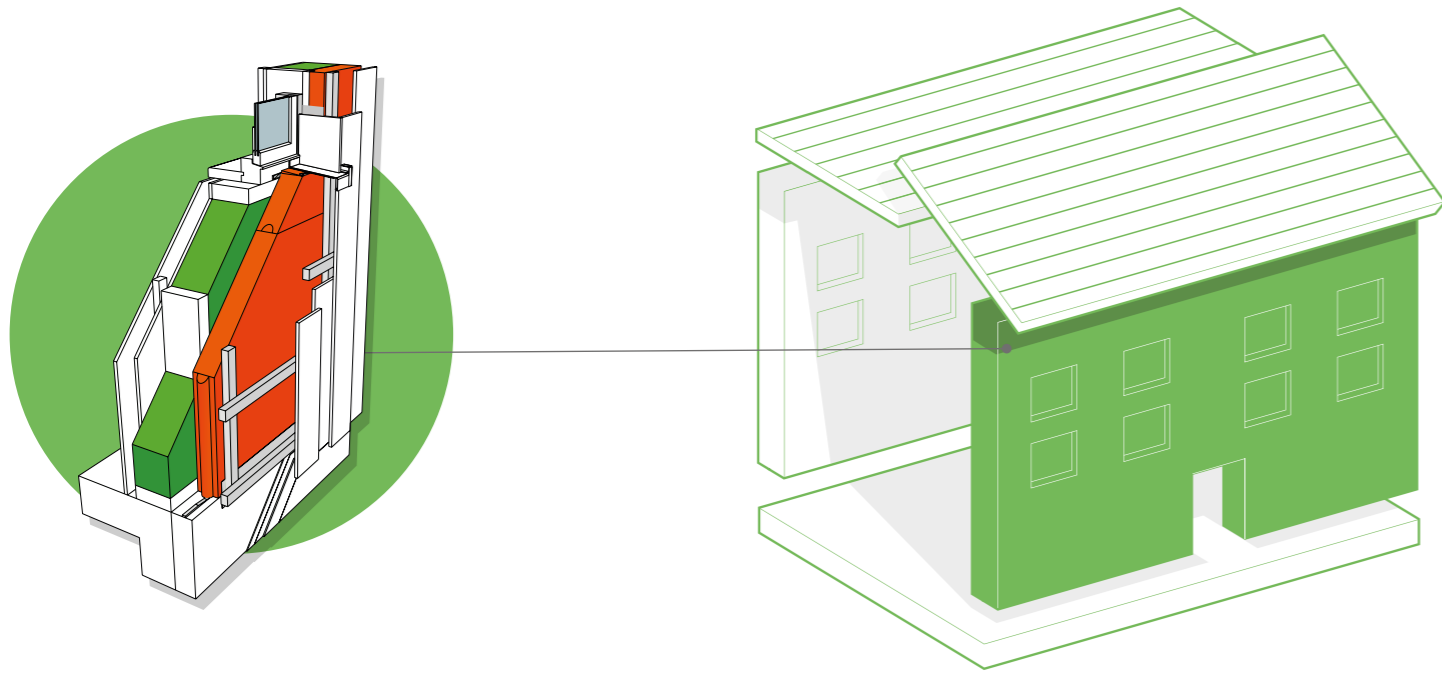
**Article Number** 107535 - PAVABOND 310

	Contents per container - ml/g	Box contents - units	Accessories included
Cartridge	310	20	20 detachable nozzles

# SYSTEM SHEETS







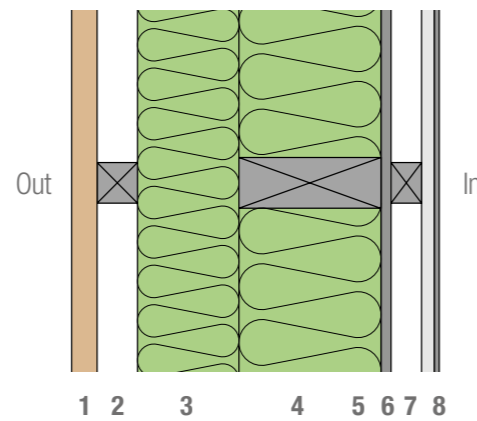
SYSTEM PERFORMANCE

u - values 0.26 – 0.10  
 y – values 0.05 – 0.02  
 airtightness 5 – 0.6 @50pa

The system complies with the most stringent of standards – from baseline building regulations through to Passivhaus. The system is suitable for all external clad finishing options including brick, stone, timber, zinc, etc.

PLAN-SECTION OF SYSTEM

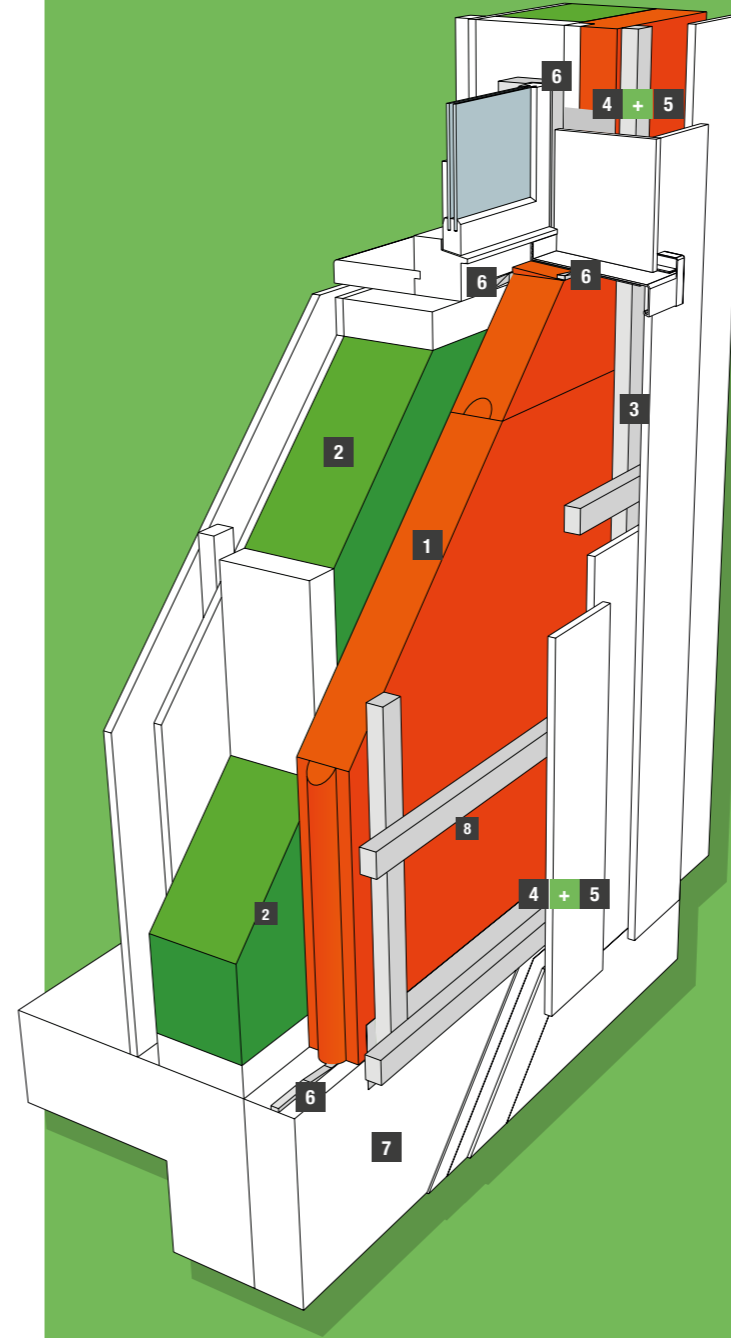
1. Cladding system (timber, brick, screen etc.)
2. Battened to create a 40mm ventilated void
3. Isolair Multi 30/40/60/80/100/120mm
4. Stud & PAVAFLEX
5. Racking board incl. airtightness detail (e.g. OSB 12/15 mm)
6. Service void 25 mm - optional  
(can be insulated for improved performance)
7. Plasterboard 12.5 mm
8. Plaster, skim




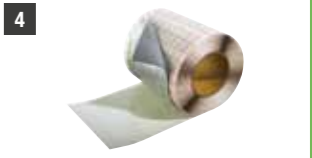






HOW PAVATEX SYSTEMS COMPARE TO STANDARD BUILD

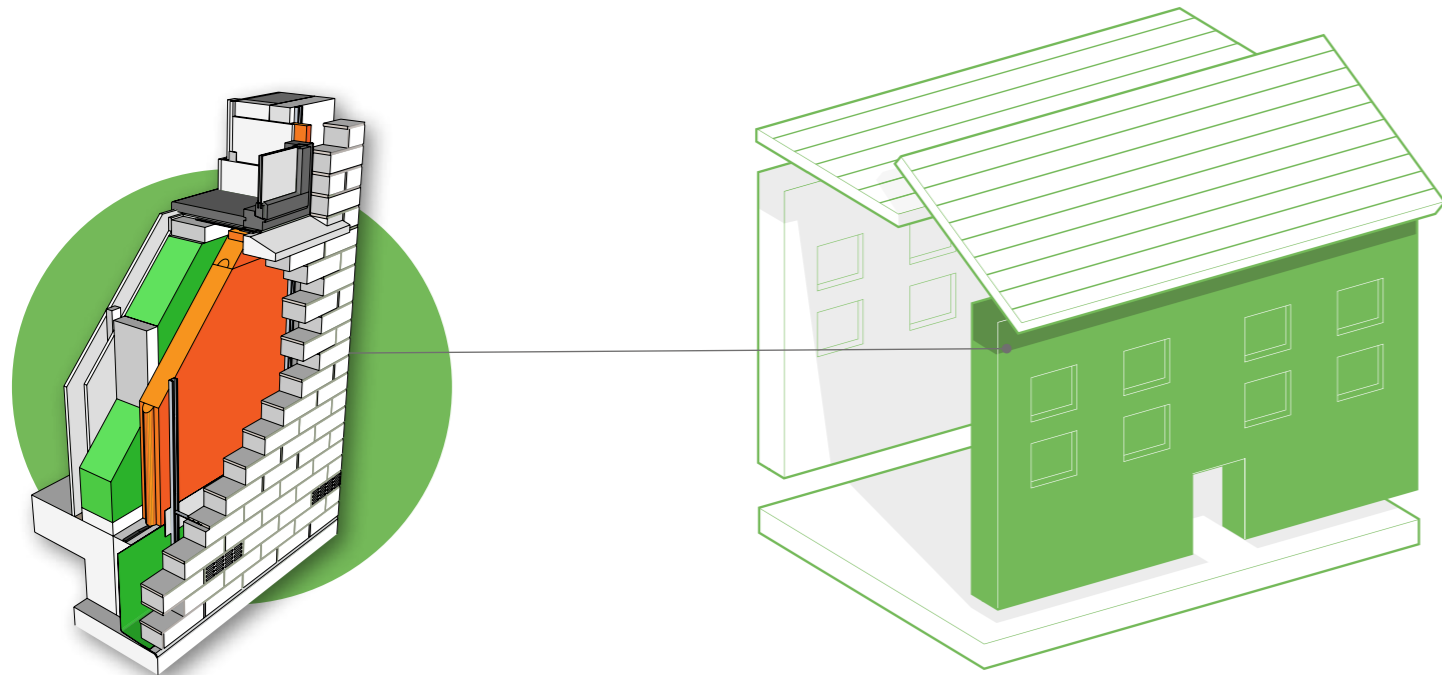


COMPONENTS & ACCESSORIES FOR PAVATEX SYSTEM FOR TIMBER FRAME: CLAD



 1 Isolair Multi	 2 Pavaflex
 3 HECO Topix	 4 Pavatape 150, external
 5 Pavaprim primer	 6 ISO-Bloco 600 2-6
 7 Plinth board (XPS)	 8 Details on request Pavatex compatible Plinth board sealing system

\* Please refer to the contents page of this pack to find more information about the range of Pavatex products



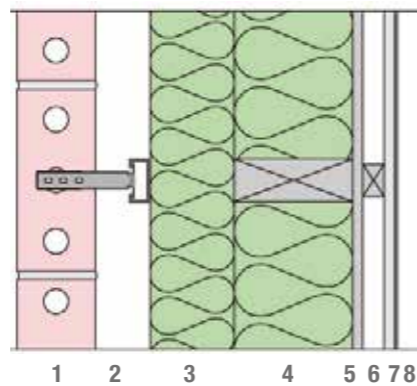
SYSTEM PERFORMANCE

u - values 0.26 – 0.10  
 y – values 0.05 – 0.02  
 airtightness 5 – 0.6 @50pa

The system complies with the most stringent of standards – from baseline building regulations through to Passivhaus. The system is suitable for most external clad options including brick & stone.

PLAN-SECTION OF SYSTEM

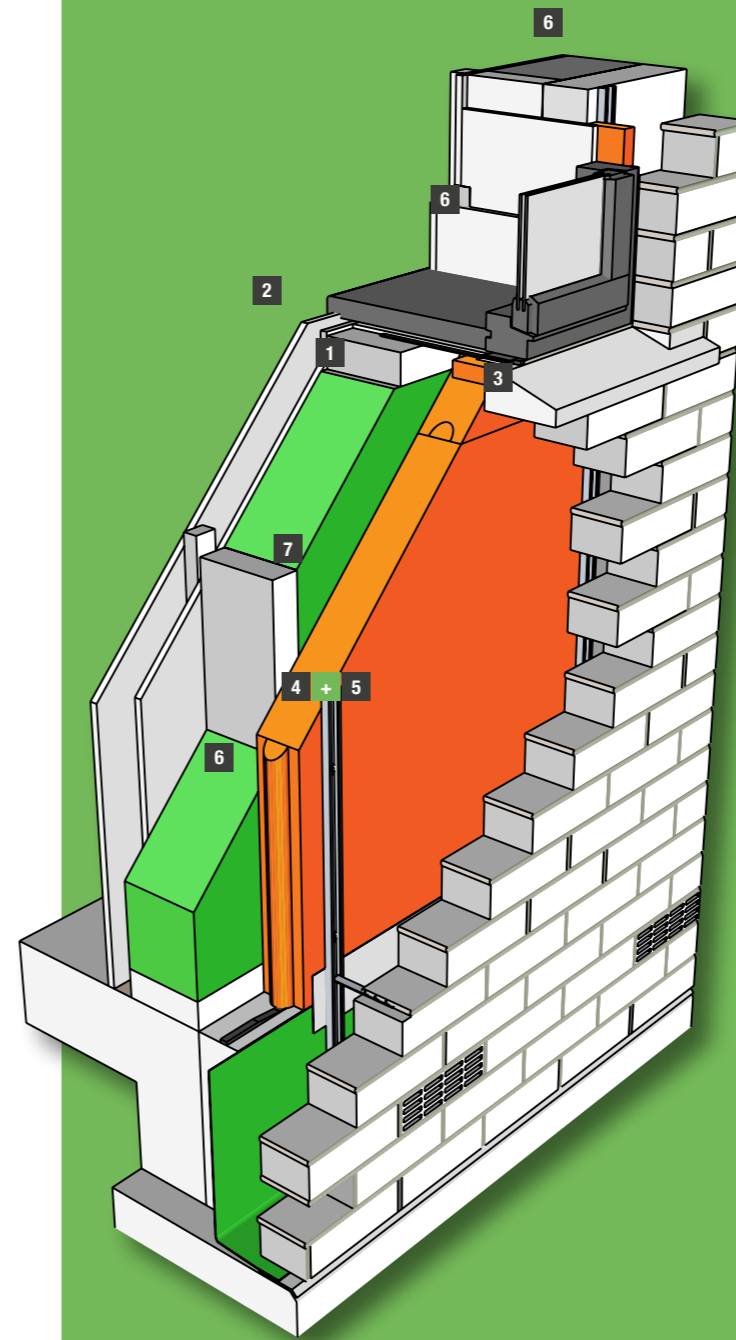
1. Brick Clad
2. Ancon SD 25 Wall Ties or similar
3. Ancon 25/14 Channels or similar
4. Isolair Multi 30/40/60/80/100/120mm
5. Stud & Pavatex PAVAFLEX
6. Racking board incl. airtightness detail (e.g. OSB 12/15 mm)
7. Service void 25 mm - optional  
(can be insulated for improved performance)
8. Plasterboard 12.5 mm
9. Plaster, skim



HOW PAVATEX SYSTEMS COMPARE TO STANDARD BUILD

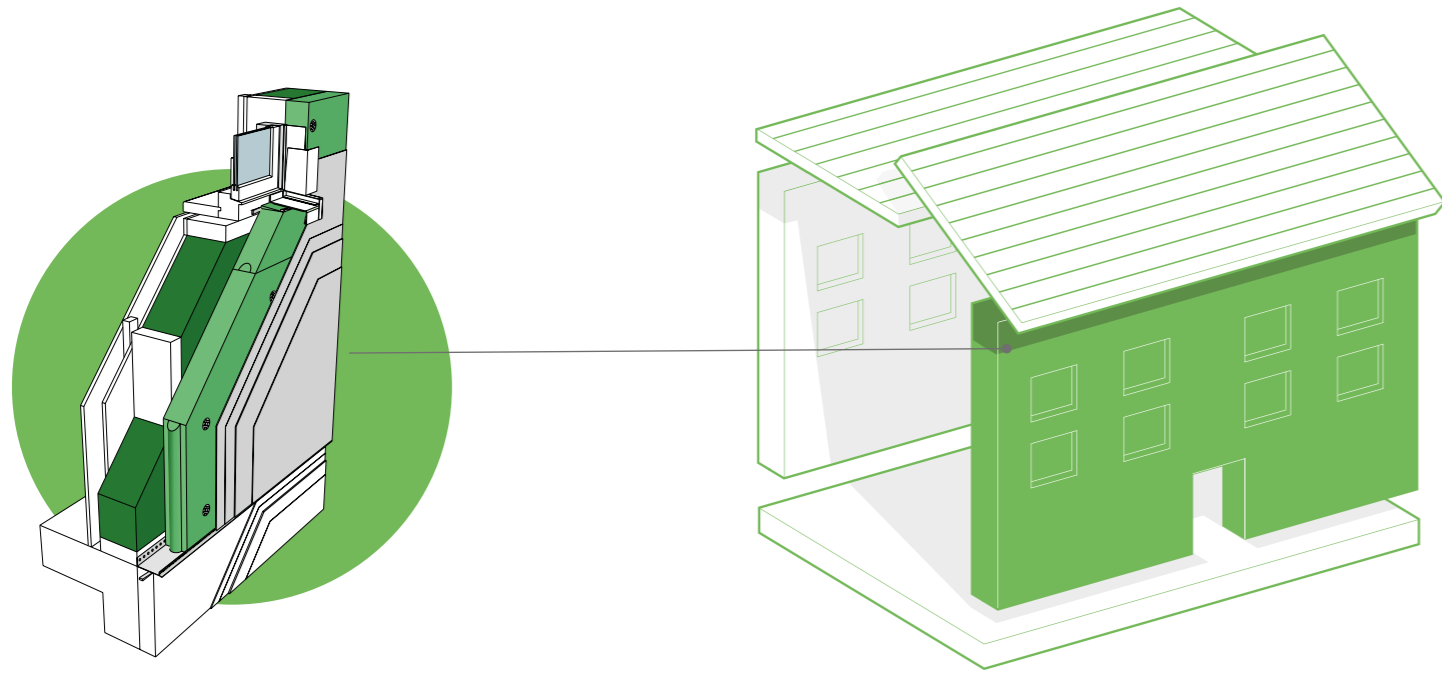


COMPONENTS & ACCESSORIES FOR PAVATEX SYSTEM FOR TIMBER FRAME: BRICKCLAD



\* Please refer to the contents page of this pack to find more information about the range of Pavatex products

\*\* Not supplied by Soprema



SYSTEM PERFORMANCE

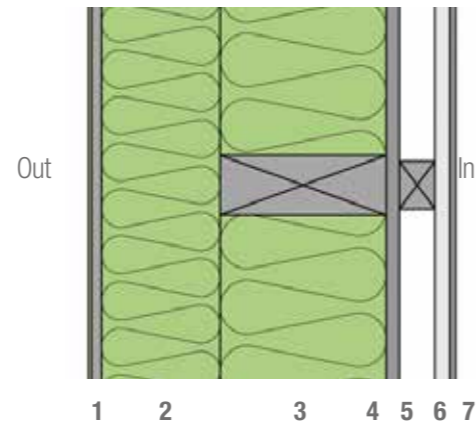
u - values 0.26 – 0.10

y – values 0.05 – 0.02

The system complies with the most stringent of standards – from baseline building regulations through to Passivhaus. The system is available in an extensive number of render options including colour, texture and weathering resistance.

PLAN-SECTION OF SYSTEM

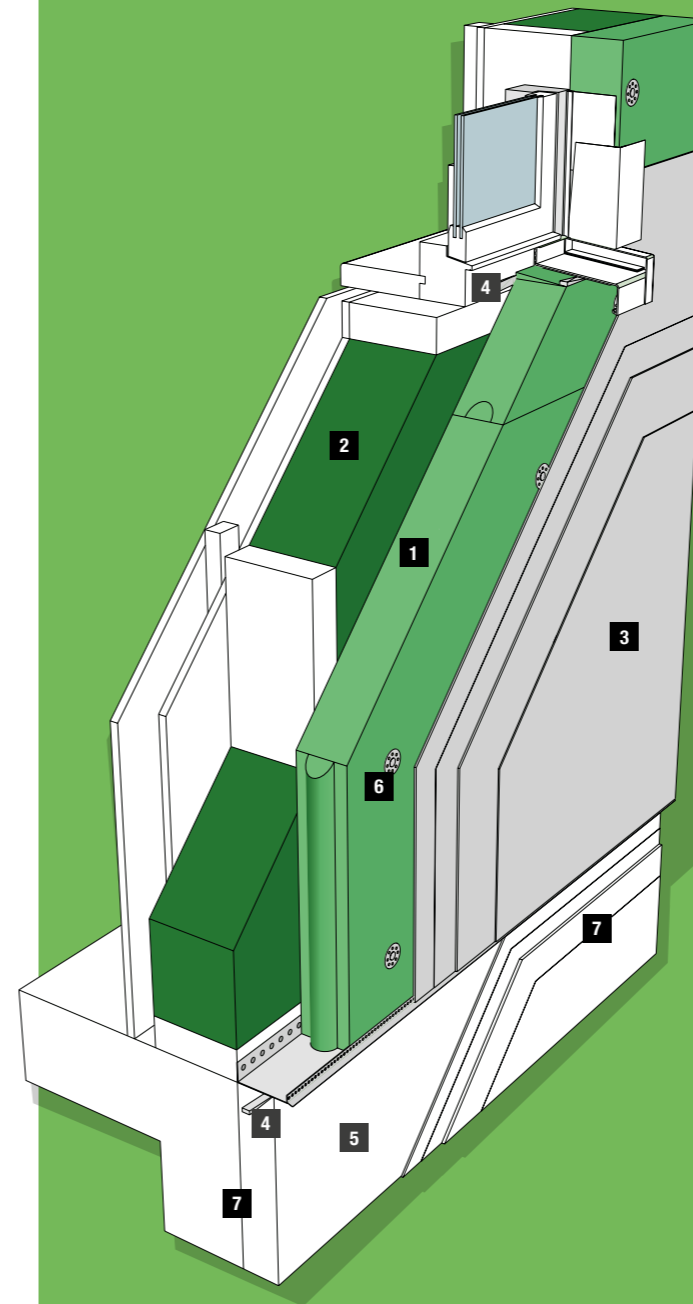
1. Pavatex compatible 2-coat render system
2. Isolair Multi 40/60/80/100/120mm
3. Stud fully filled with PAVAFLEX
4. Racking board incl. airtightness detail (eg OSB 12/15mm)
5. Service void 25 mm  
(can be insulated for improved performance)
6. Plasterboard 12.5 mm
7. Plaster, skim



HOW PAVATEX SYSTEMS COMPARE TO STANDARD BUILD

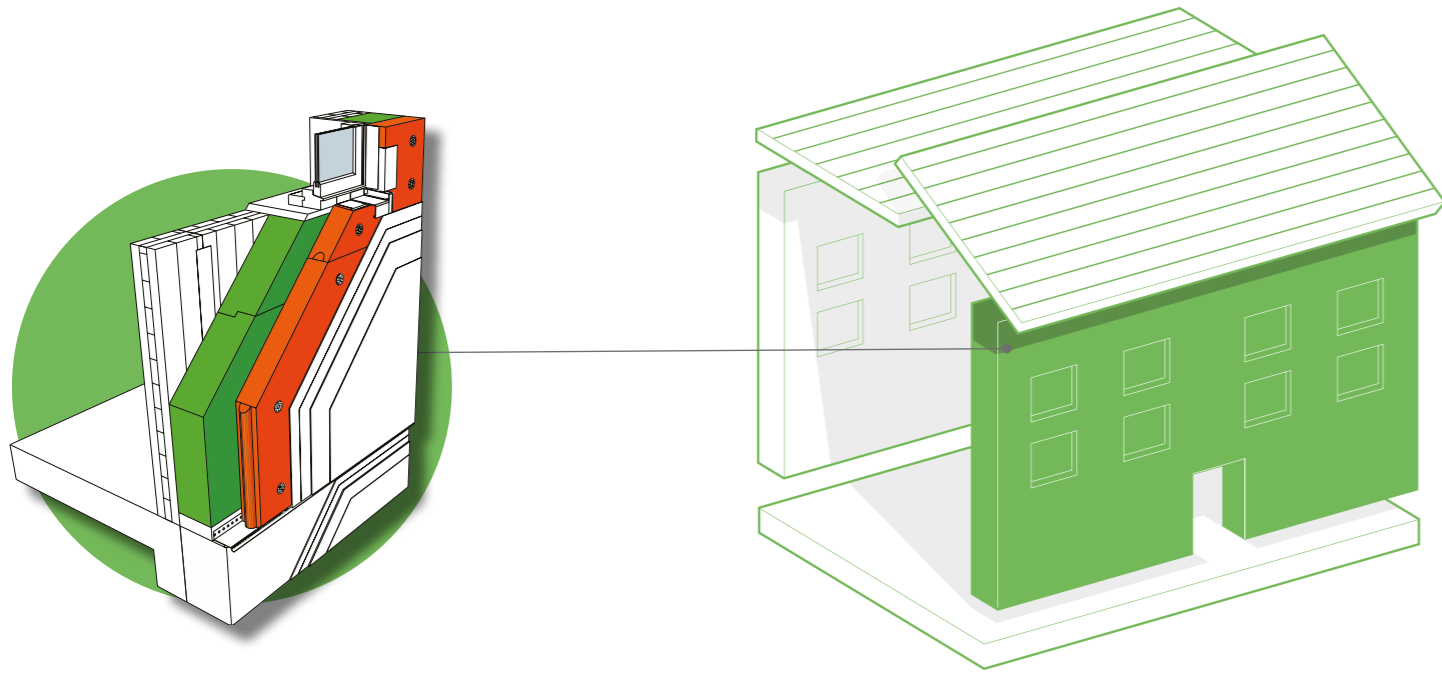


COMPONENTS & ACCESSORIES FOR PAVATEX SYSTEM FOR TIMBER FRAME: RENDER



 <b>1</b> Isolair Multi	 <b>2</b> Pavaflex
 <b>3</b> Details on request Pavatex compatible external render system	 <b>4</b> ISO-Bloco 600 2-6
 <b>5</b> Plinth board (XPS)	 <b>6</b> STR-H
 <b>7</b> Details on request Pavatex compatible plinth board render and sealing system	

\* Please refer to the contents page of this pack to find more information about the range of Pavatex products



SYSTEM PERFORMANCE

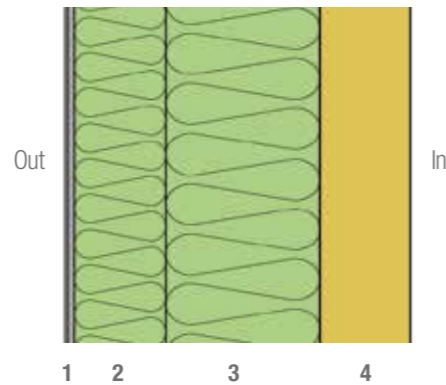
u - values 0.26 – 0.10

y - values 0.05 – 0.02

The system complies with the most stringent of standards – from baseline building regulations through to Passivhaus. The system is available in an extensive number of render options including colour, texture and weathering resistance.

PLAN-SECTION OF SYSTEM

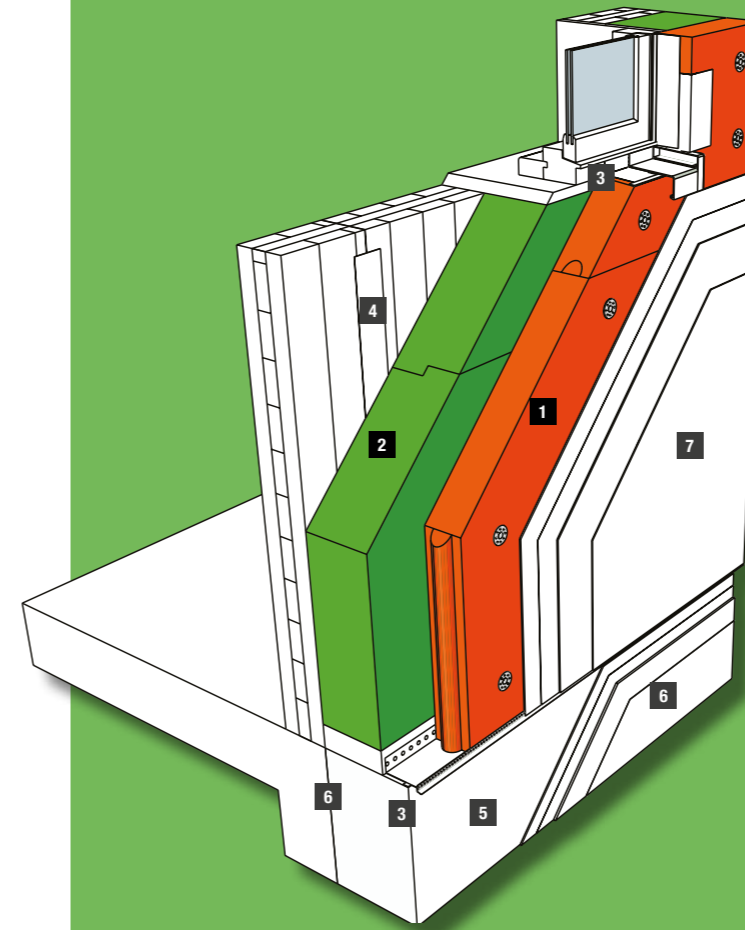
- 1. Pavatex 2-coat render system
- 2. Isolair Multi 60mm
- 3. PAVATHERM standard 80/100/120/140mm or more
- 4. Cross laminated timber structure



HOW PAVATEX SYSTEMS COMPARE TO STANDARD BUILD

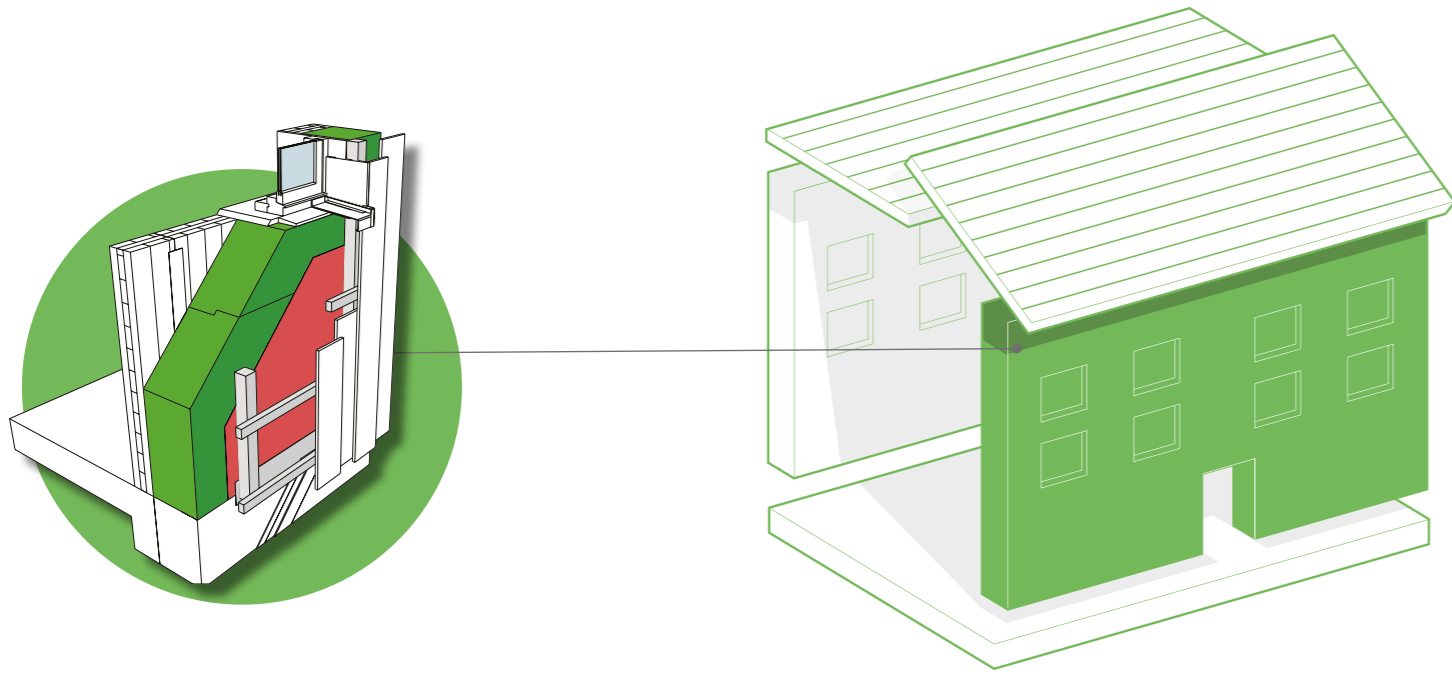


COMPONENTS & ACCESSORIES FOR PAVATEX SYSTEM FOR LAMINATED TIMBER RENDER



1  Isolair Multi	2  Pavatherm
3  ISO-Bloco 600 2-6	4  Pavafix 60 Tape
5  Plinth board (XPS)	6  Pavatex compatible Plinth board sealing system
7  Pavatex compatible external render system	 Details on request

\* Please refer to the contents page of this pack to find more information about the range of Pavatex products



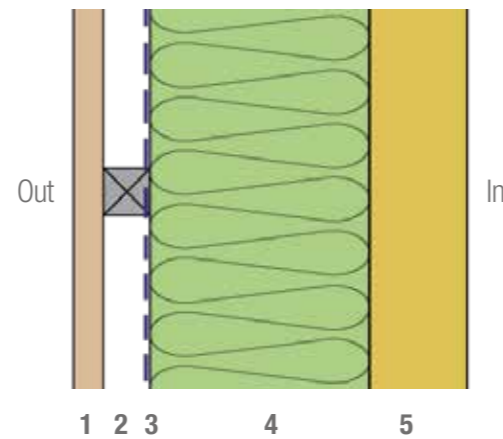
SYSTEM PERFORMANCE

u - values 0.26 – 0.10  
 y - values 0.05 – 0.02  
 airtightness 5 – 0.6 @50pa

The system complies with the most stringent of standards – from baseline building regulations through to Passivhaus. The system is suitable for all external clad finishing options including brick, stone, timber, zinc, etc.

PLAN-SECTION OF SYSTEM

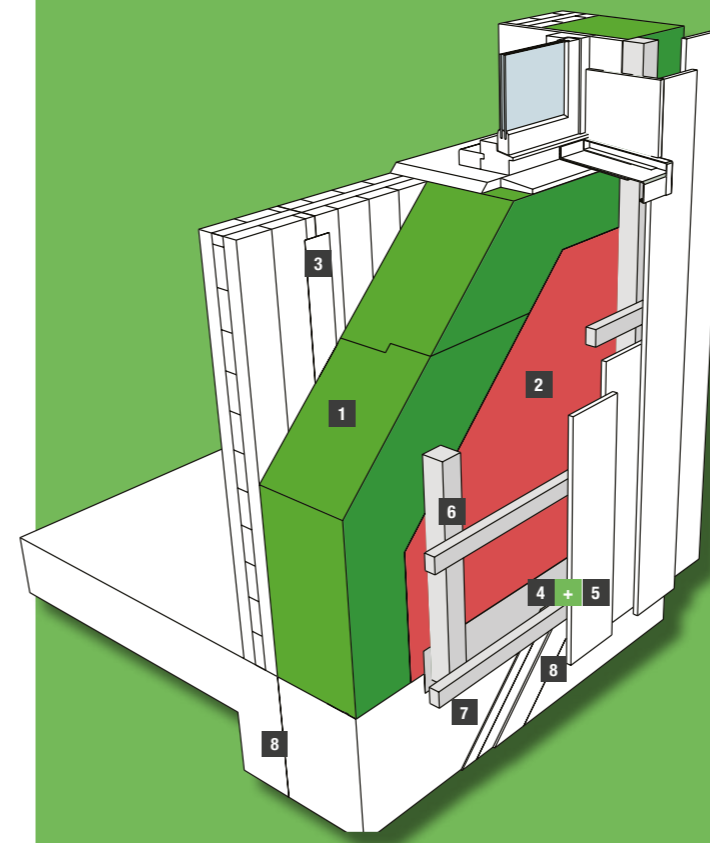
1. Cladding system (timber, brick, screen etc.)
2. Battened to create a 50mm ventilated void
3. Pavatex ABD (red)
4. PAVATHERM standard 80/100/120/140mm or more
5. CROSS LAMINATED TIMBER STRUCTURE








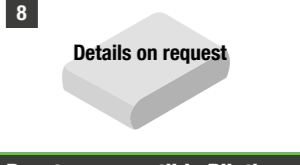


HOW PAVATEX SYSTEMS COMPARE TO STANDARD BUILD

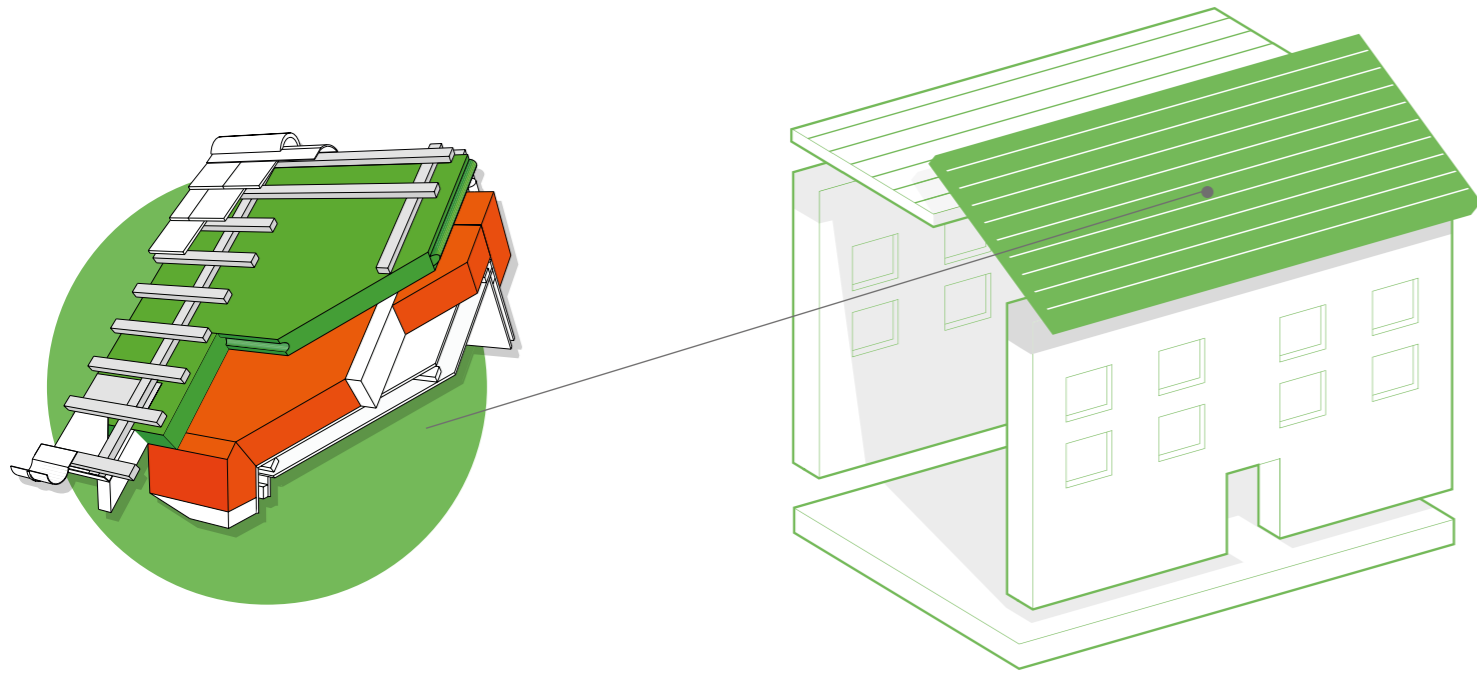


COMPONENTS & ACCESSORIES FOR PAVATEX SYSTEM FOR LAMINATED TIMBER CLAD



 1 Pavatherm	 2 ADB Breathable Membrane
 3 Pavafix 60 Tape	 4 Pavafix 150 Tape
 5 Pavaprim primer	 6 Heco Topix-Therm, double threaded fixings
 7 Plinth board (XPS)	 8 Details on request Pavatex compatible Plinth board render and sealing system

\* Please refer to the contents page of this pack to find more information about the range of Pavatex products



SYSTEM PERFORMANCE

- u - values 0.26 – 0.10

---

- y – values 0.05 – 0.02

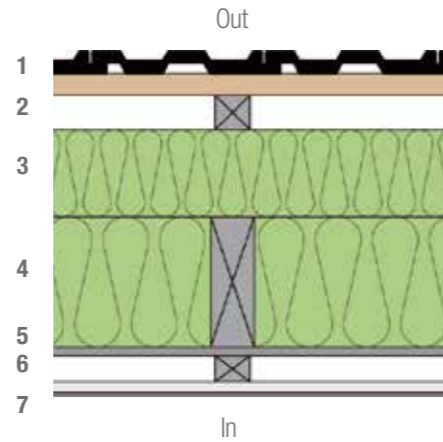
---

- airtightness 5 – 0.6 @50pa

The system complies with the most stringent of standards – from baseline building regulations through to Passivhaus. The system is suitable for most external finishing options including metal, clay or slate tiling etc.

CROSS-SECTION OF SYSTEM

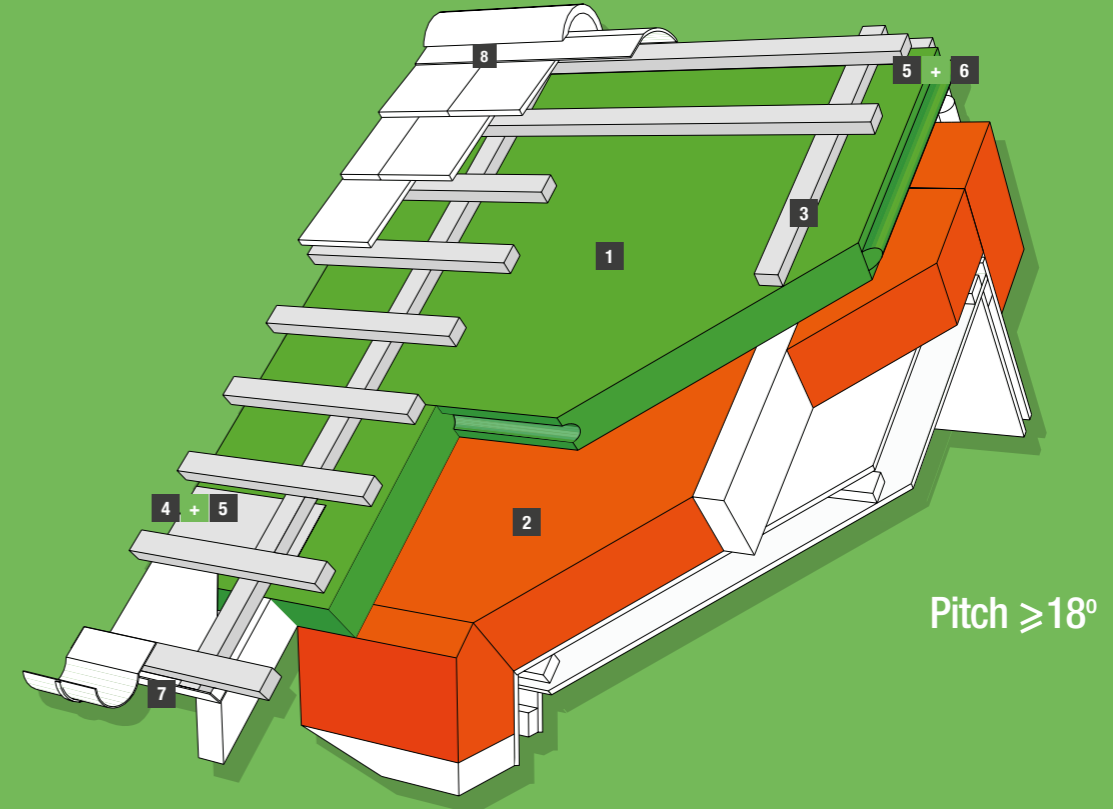
1. Roofing (tiles, slates, tile batten etc.)
2. Counter battens 50 x 38 mm
3. Isolair Multi 30/40/60/80/100/120mm
4. Rafters fully filled with Pavaflex
5. OSB (support &. airtightness)
6. Service void 25 mm - optional  
(can be insulated for improved performance)
7. Plasterboard 12.5 mm with skim




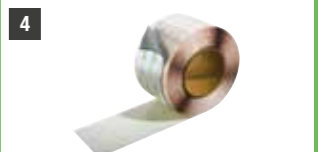

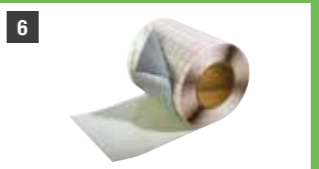
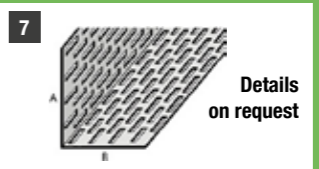
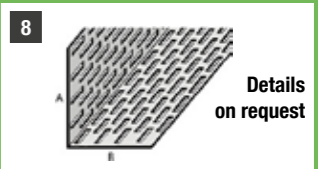


HOW PAVATEX SYSTEMS COMPARE TO STANDARD BUILD

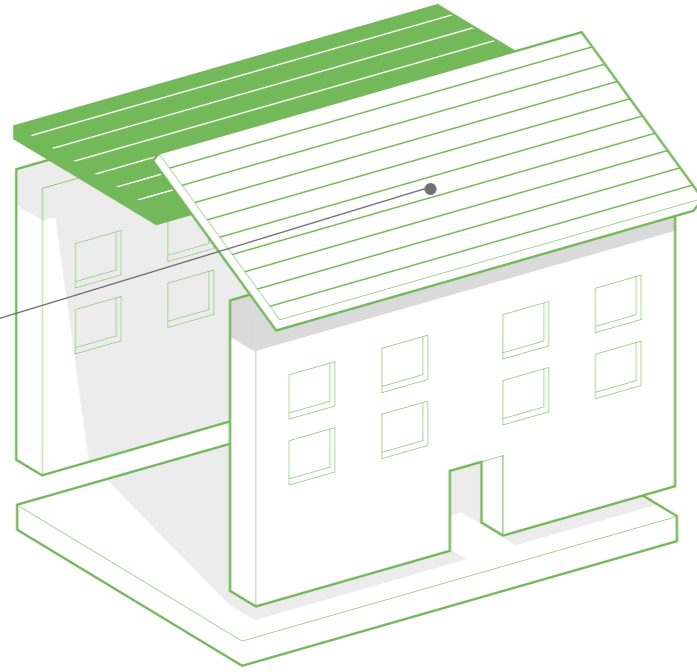
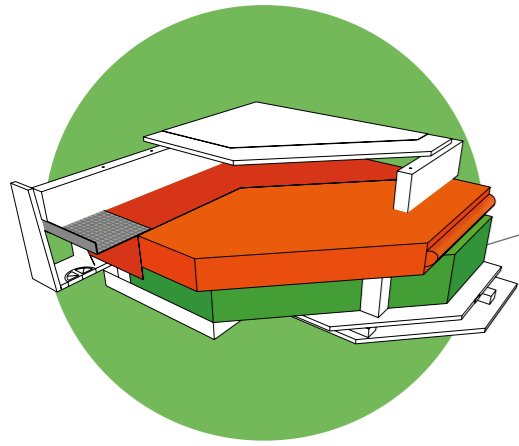


COMPONENTS & ACCESSORIES FOR PAVATEX SYSTEM FOR ROOF: PITCHED



 <b>1</b> Isolair Multi	 <b>2</b> Pavaflex	 <b>3</b> HECO Topix	 <b>4</b> Pavatape 75
 <b>5</b> Pavaprim primer	 <b>6</b> Pavatape 150	 <b>7</b> Eaves Vents Details on request	 <b>8</b> Ridge Vent Details on request

\* Please refer to the contents page of this pack to find more information about the range of Pavatex products



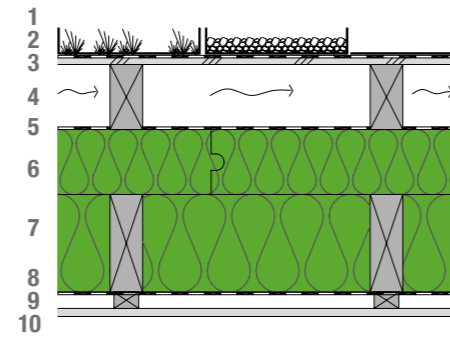
SYSTEM PERFORMANCE

u - values 0.26 – 0.10  
 y – values 0.05 – 0.02  
 airtightness 5 – 0.6 @50pa

The system complies with the most stringent of standards – from baseline building regulations through to Passivhaus. The system is suitable for most external finishing options including sedum, metal, timber or similar decking.

CROSS-SECTION OF SYSTEM

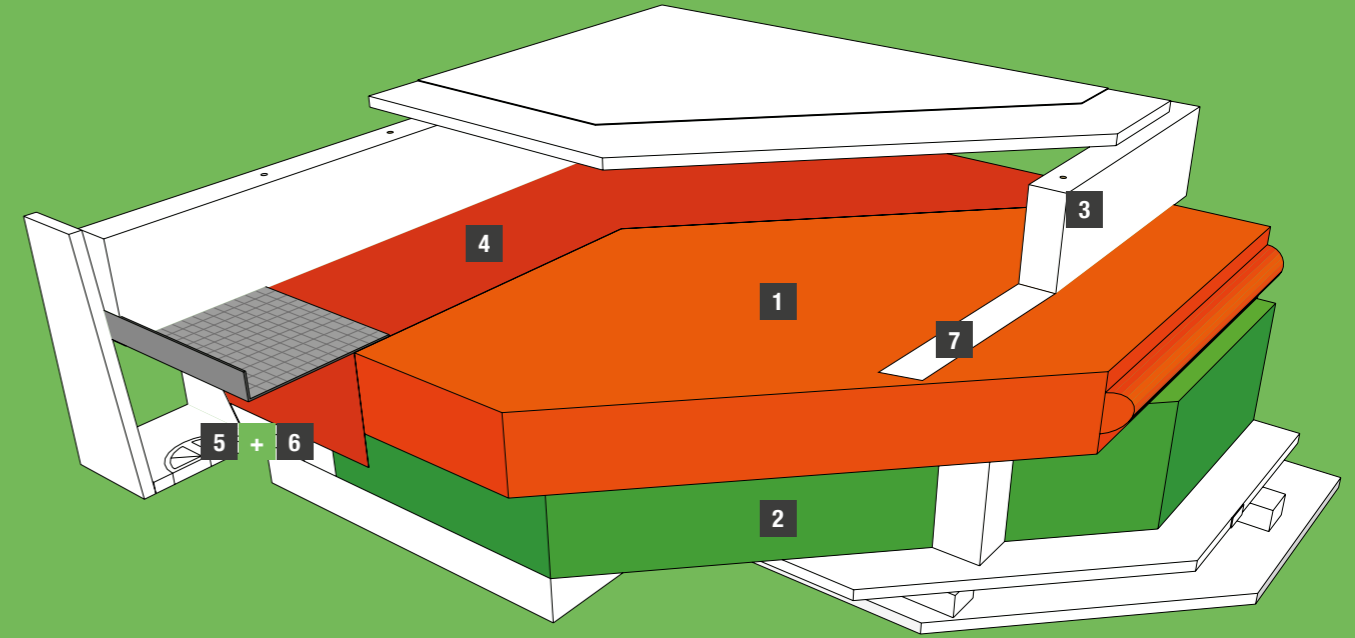
1. Finish covering (such as green roof or gravel)
2. Soprema flat roof membrane
3. WBP Plywood
4. Battens for ventilation (100mm)
5. Breathable roofing membrane
6. Isolair Multi
7. Rafters / PAVAFLEX
8. Airtightness membrane (taped)
9. Service void 25mm
10. Plasterboard 12.5mm



HOW PAVATEX SYSTEMS COMPARE TO STANDARD BUILD



COMPONENTS & ACCESSORIES FOR PAVATEX SYSTEM FOR ROOF: FLAT

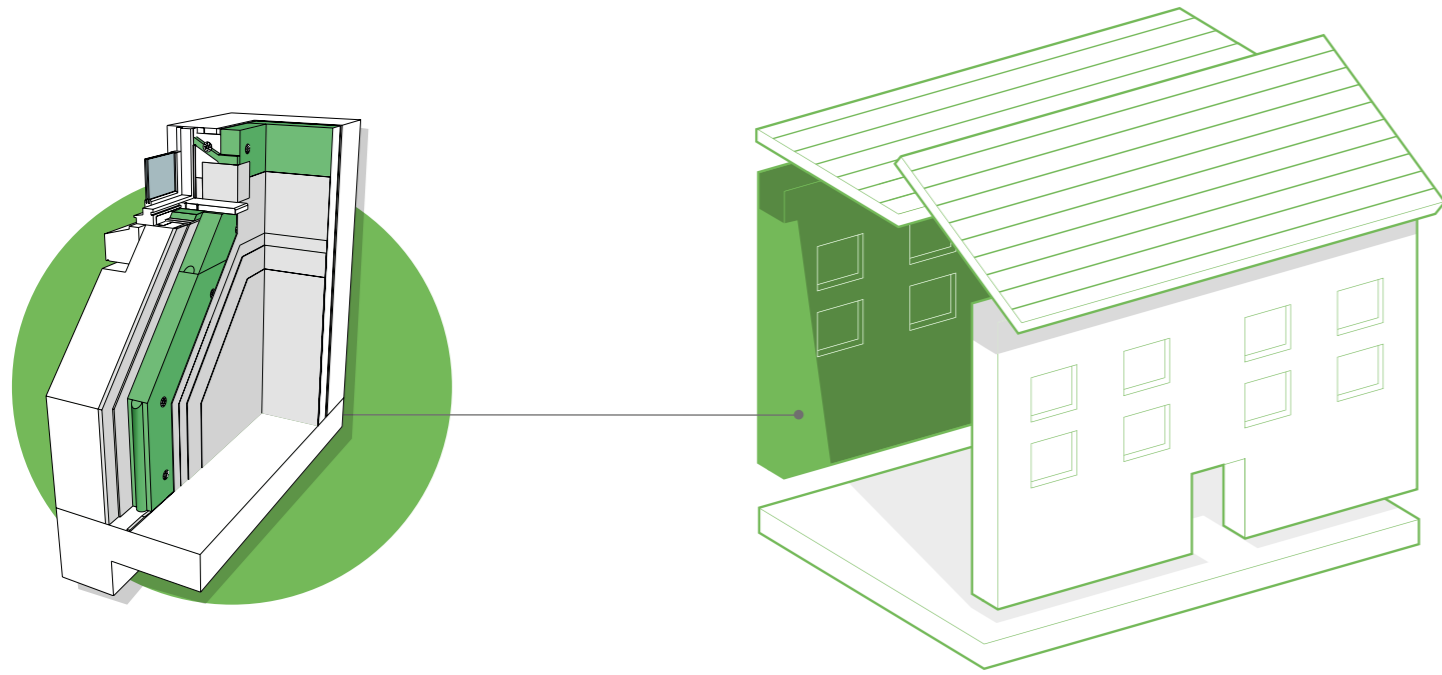


Pitch ≥ 3°

 <b>1</b> Isolair Multi	 <b>2</b> Pavaflex	 <b>3</b> Heco Topix-Therm, double threaded fixings	 <b>4</b> ADB Breathable Membrane
 <b>5</b> Pavatape	 <b>6</b> Pavaprim primer	 <b>7</b> Pavatex SN Band, Screw sealing tape	

\* Please refer to the contents page of this pack to find more information about the range of Pavatex products

## RETROFIT SYSTEM FOR INTERNAL WALL INSULATION LIME PLASTERED FINISH



### SYSTEM PERFORMANCE

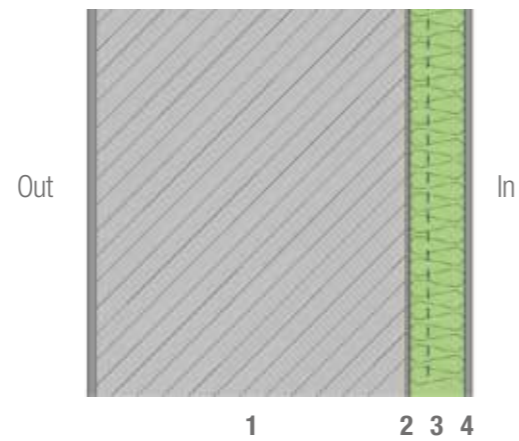
u - values 0.26 – 0.10

airtightness 5 – 3 @50pa

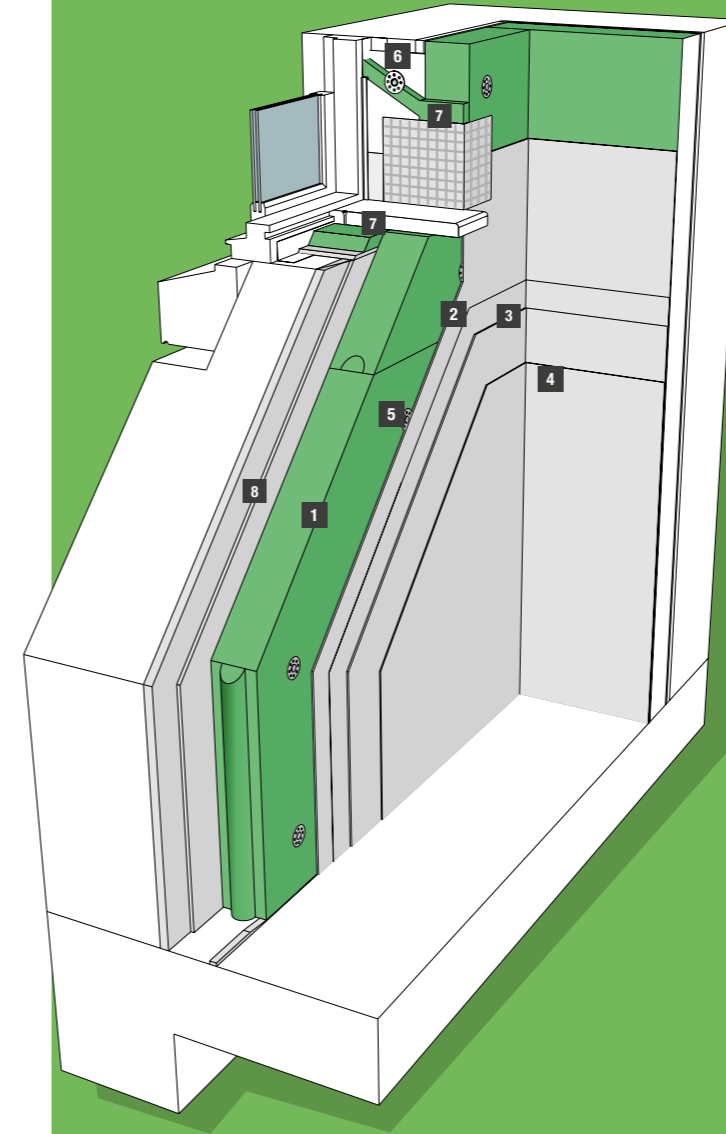
A highly effective solution that eliminates the moisture risk associated with IWI. Pavatex IWI systems use Isolair Multi to provide active moisture control through absorption and redistribution of moisture within a woodfibre board. The system combines the best of modern technological advances with natural, traditional materials; finished with a Pavatex compatible lime plaster that perfectly complements traditional and modern wall finishes.

### PLAN-SECTION OF SYSTEM

1. External wall (masonry/stone)
2. Pavatex compatible lime bonding coat
3. Isolair Multi
4. Pavatex compatible lime plaster system



## COMPONENTS & ACCESSORIES FOR PAVATEX INTERNAL WALL INSULATION SYSTEM LIME PLASTERED FINISH



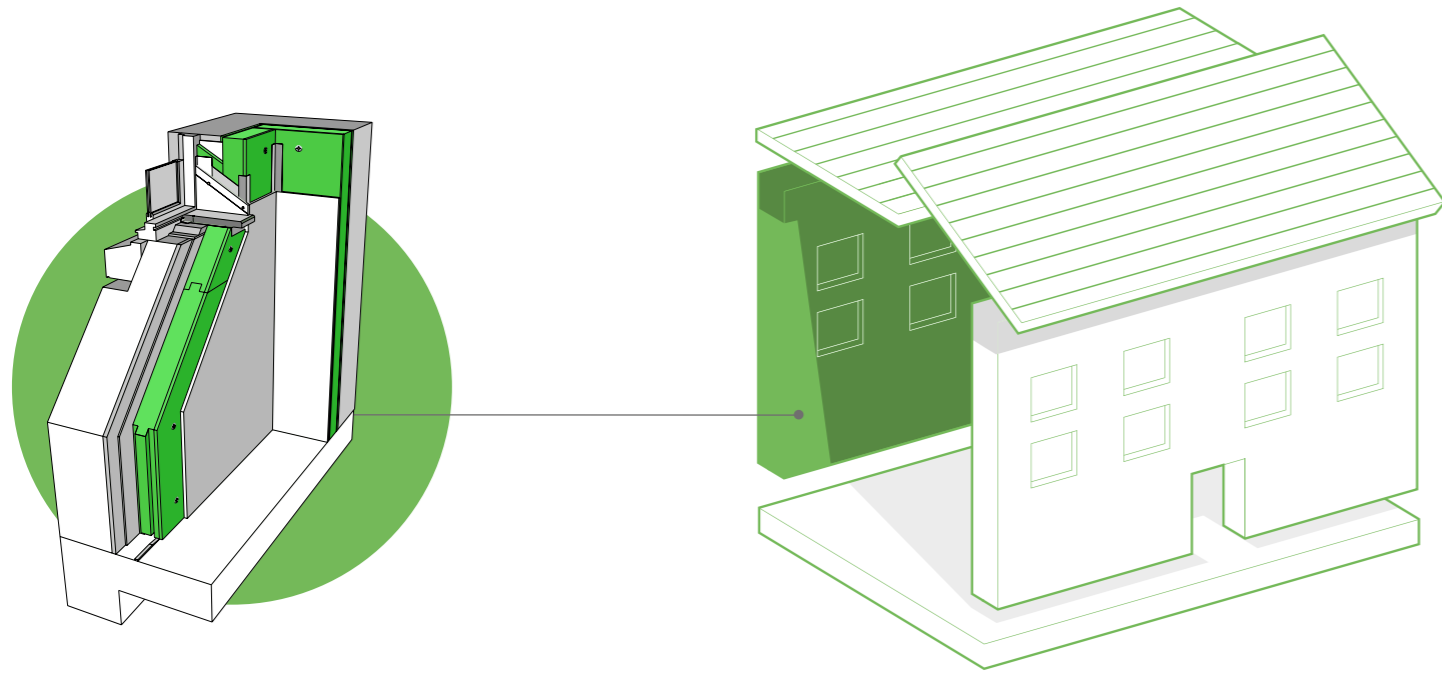
<b>1</b>  Isolair Multi	<b>2 + 3 + 4</b>  Details on request Pavatex compatible lime plaster system
<b>5</b>  Ejot H3	<b>6</b>  Pavatex WIN Tape
<b>7</b>  Reveal Board	<b>8</b>  Details on request Pavatex compatible lime levelling coat

### HOW PAVATEX SYSTEMS COMPARE TO STANDARD BUILD



\* Please refer to the contents page of this pack to find more information about the range of Pavatex products





SYSTEM PERFORMANCE

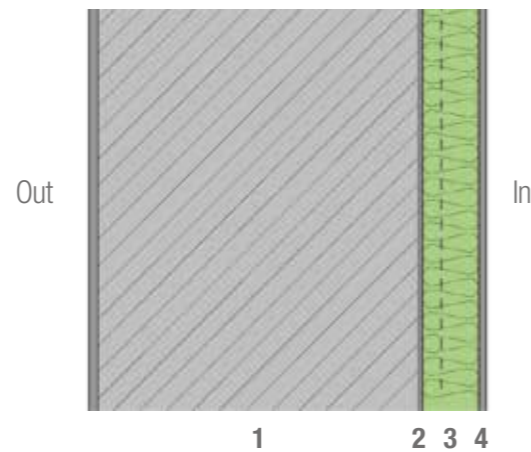
u - values 0.26 – 0.10

airtightness 5 – 3 @50pa

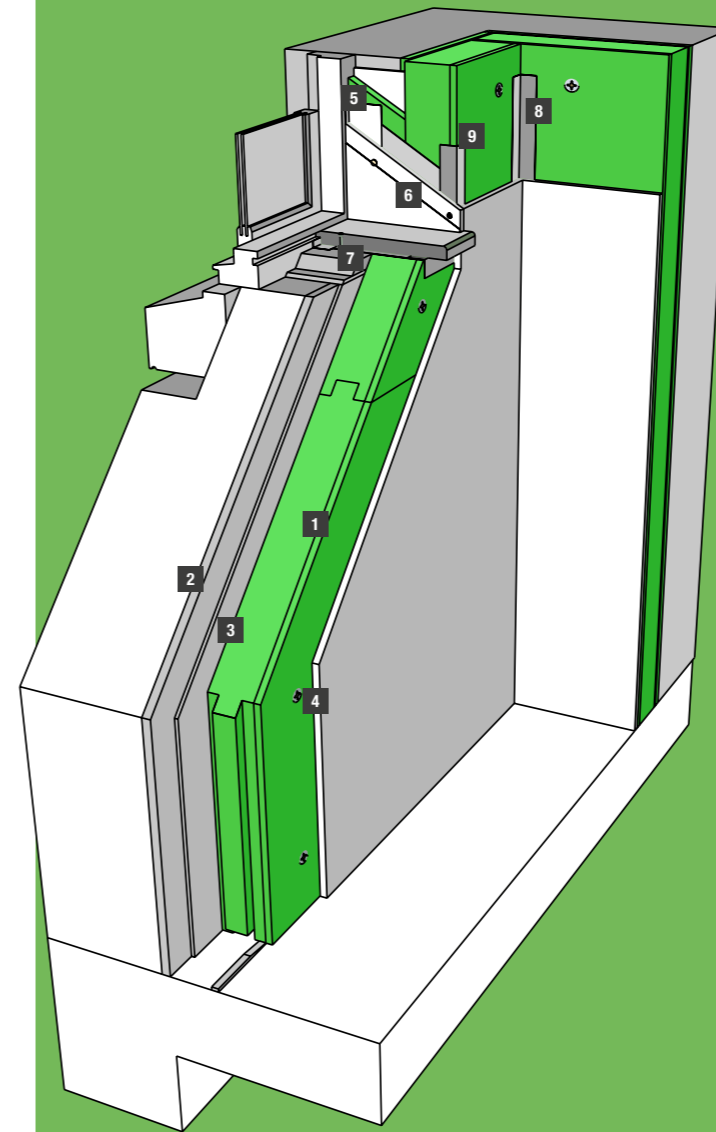
A highly effective solution that eliminates the moisture risk associated with IWI. Pavatex IWI systems use Pavadry to provide active moisture control through absorption and redistribution of moisture within a woodfibre board and integral mineral layer. The system incorporates a composite board, that is drylined with plasterboard, providing a load bearing surface. Installed and made good within a day, the system provides a clean lined modern finish.

PLAN-SECTION OF SYSTEM

- 1. External wall (masonry/stone)
- 2. Pavatex absorbent plaster (min 5mm)
- 3. Pavatex Pavadry
- 4. Plasterboard or Fermacell board

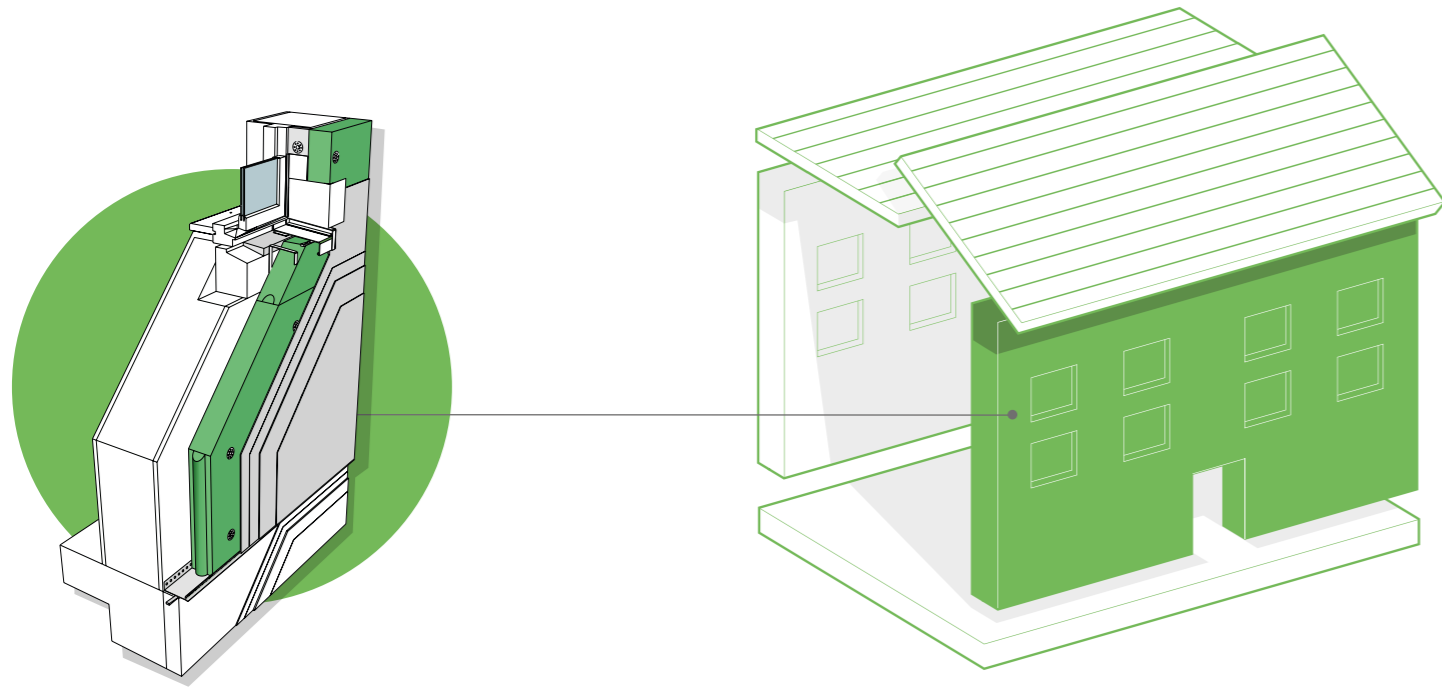


HOW PAVATEX SYSTEMS COMPARE TO STANDARD BUILD



 1 Pavadry	 2 Details on request Pavatex compatible levelling coat (optional)
 3 Details on request Pavatex compatible lime bonding coat.	 4 MRS-U
 5 Pavafix WIN, plaster tape	 6 Ejot H3
 7 Reveal Board	 8 + 9 Pavafix 20/40 and Pavafix 60 Internal Tape

\* Please refer to the contents page of this pack to find more information about the range of Pavatex products



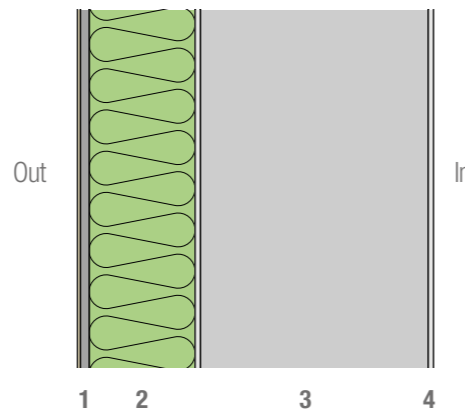
SYSTEM PERFORMANCE

u - values 0.26 – 0.10  
 y - values 0.05 – 0.02  
 airtightness 5 – 0.6 @50pa

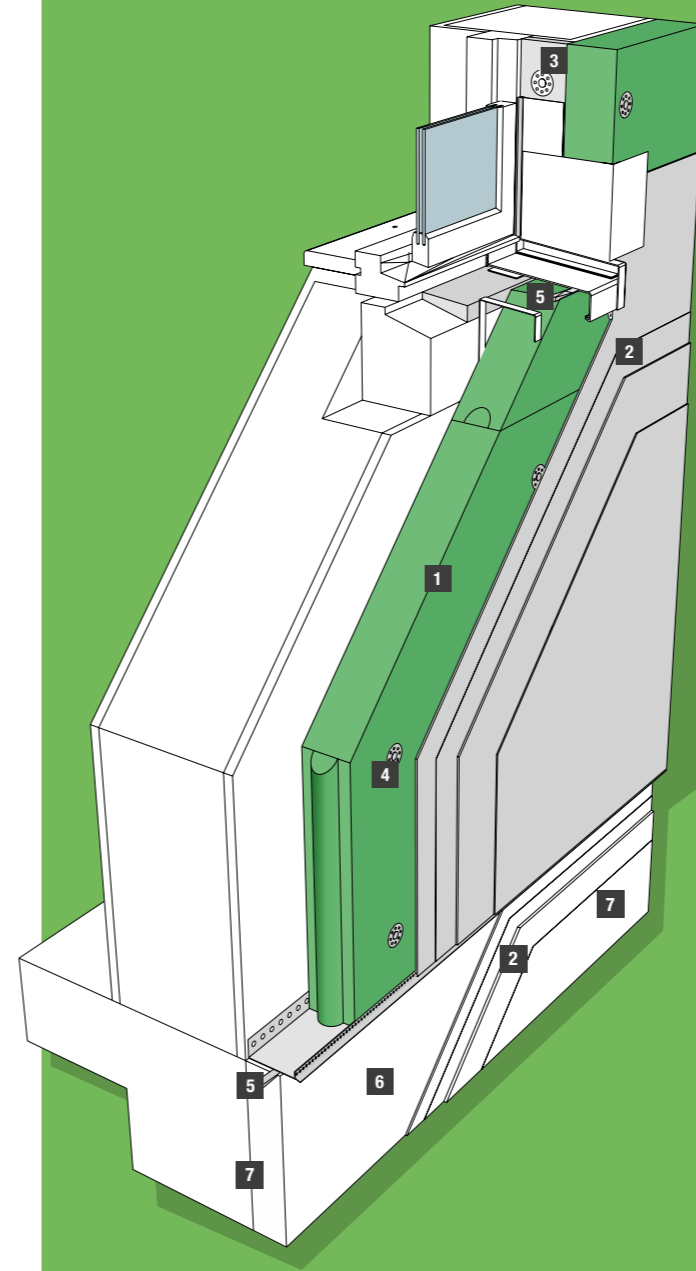
The system complies with the most stringent of standards – from baseline building regulations through to Passivhaus. The system is available in an extensive number of render options including colour, texture and weathering resistance.

PLAN-SECTION OF SYSTEM

- 1. Pavatex 2-coat render system
- 2. Isolair Multi 40/60/80/100/120/140/160mm
- 3. Masonry substrate
- 4. Plaster

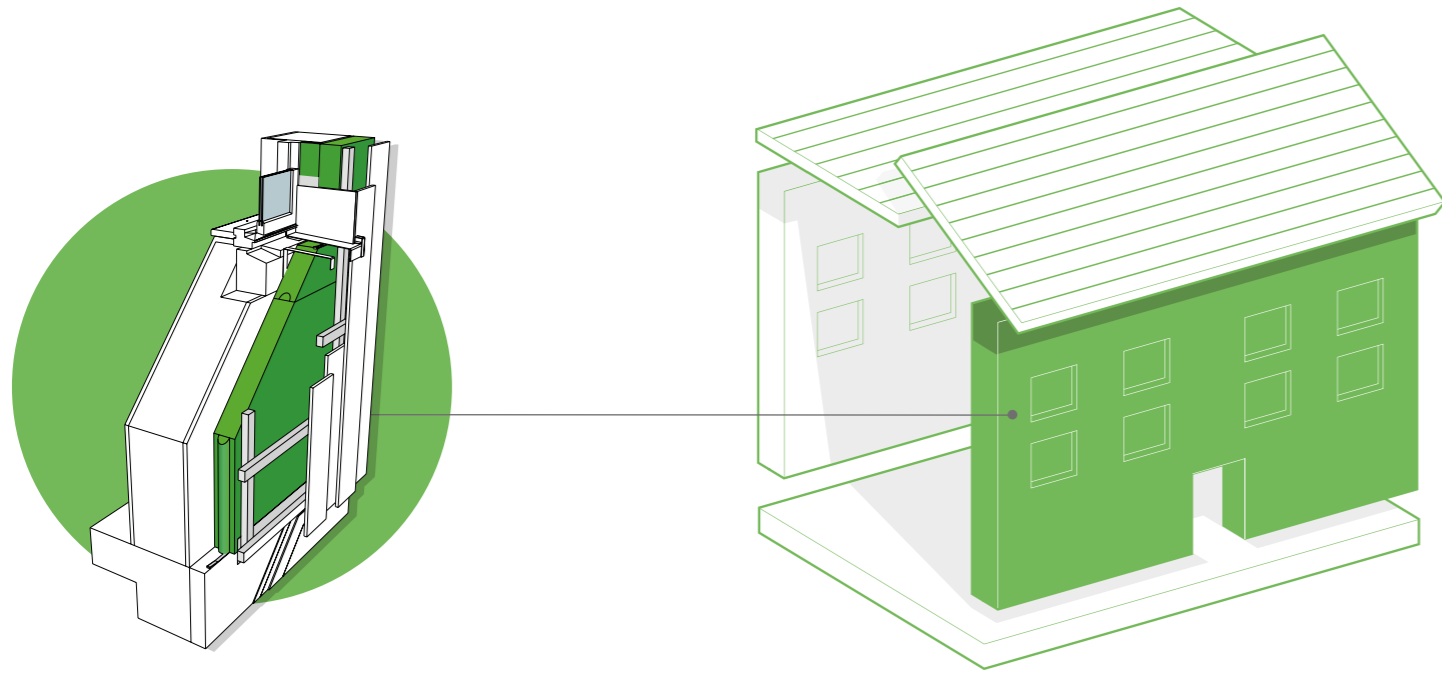


HOW PAVATEX SYSTEMS COMPARE TO STANDARD BUILD



Isolair Multi	Pavatex compatible render system
Reveal Board	H1 eco
ISO-Bloco 600 6-15	Plinth board (XPS)
Pavatex compatible Plinth board render and sealing system	

\* Please refer to the contents page of this pack to find more information about the range of Pavatex products



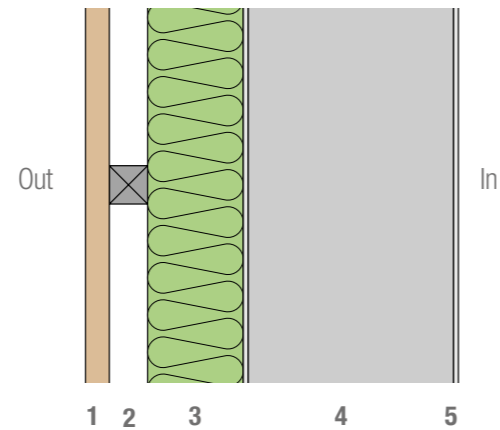
SYSTEM PERFORMANCE

u - values 0.30 – 0.10  
 y - values 0.05 – 0.02  
 airtightness 5 – 0.6 @50pa

The system complies with the most stringent of standards – from baseline building regulations through to Passivhaus. The system is suitable for all external clad finishing options including brick, stone, timber, zinc, etc.

PLAN-SECTION OF SYSTEM

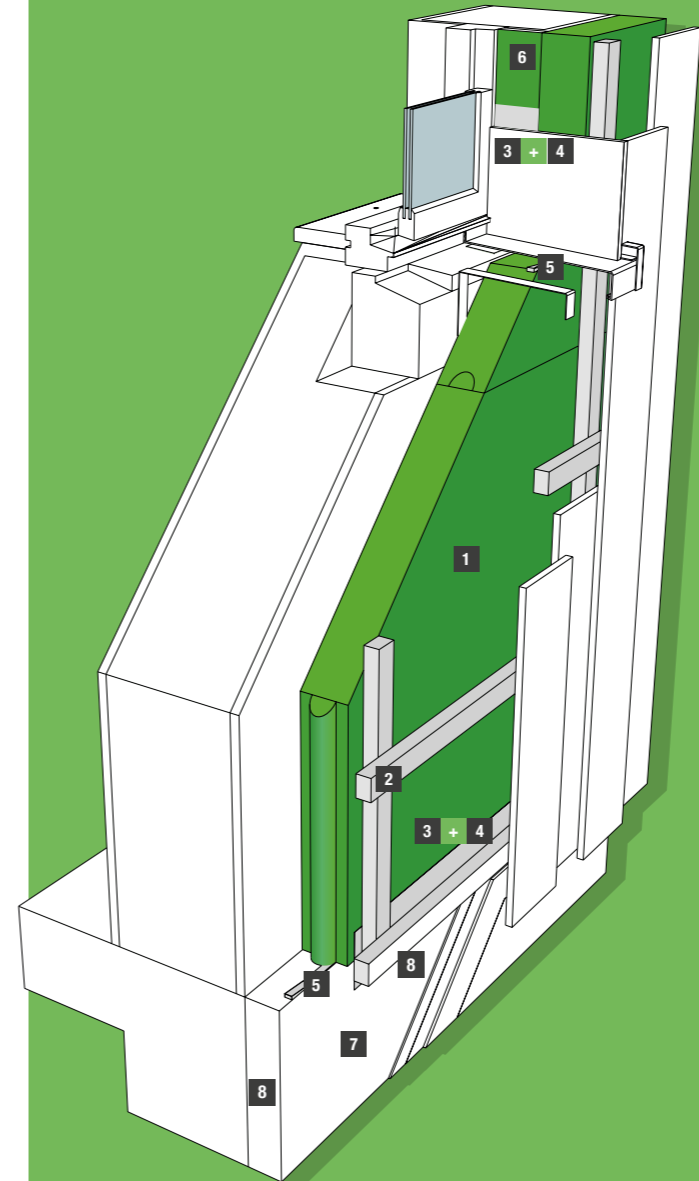
1. Cladding system (timber, brick, screen etc.)
2. Battened to create a 40mm ventilated void
3. Isolair Multi 30/40/60/80/100/120mm
4. Masonry substrate
5. Plaster



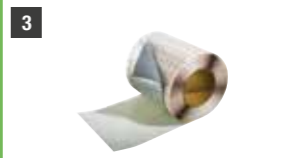




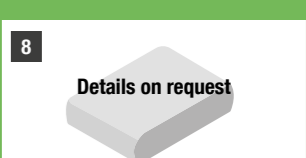


HOW PAVATEX SYSTEMS COMPARE TO STANDARD BUILD

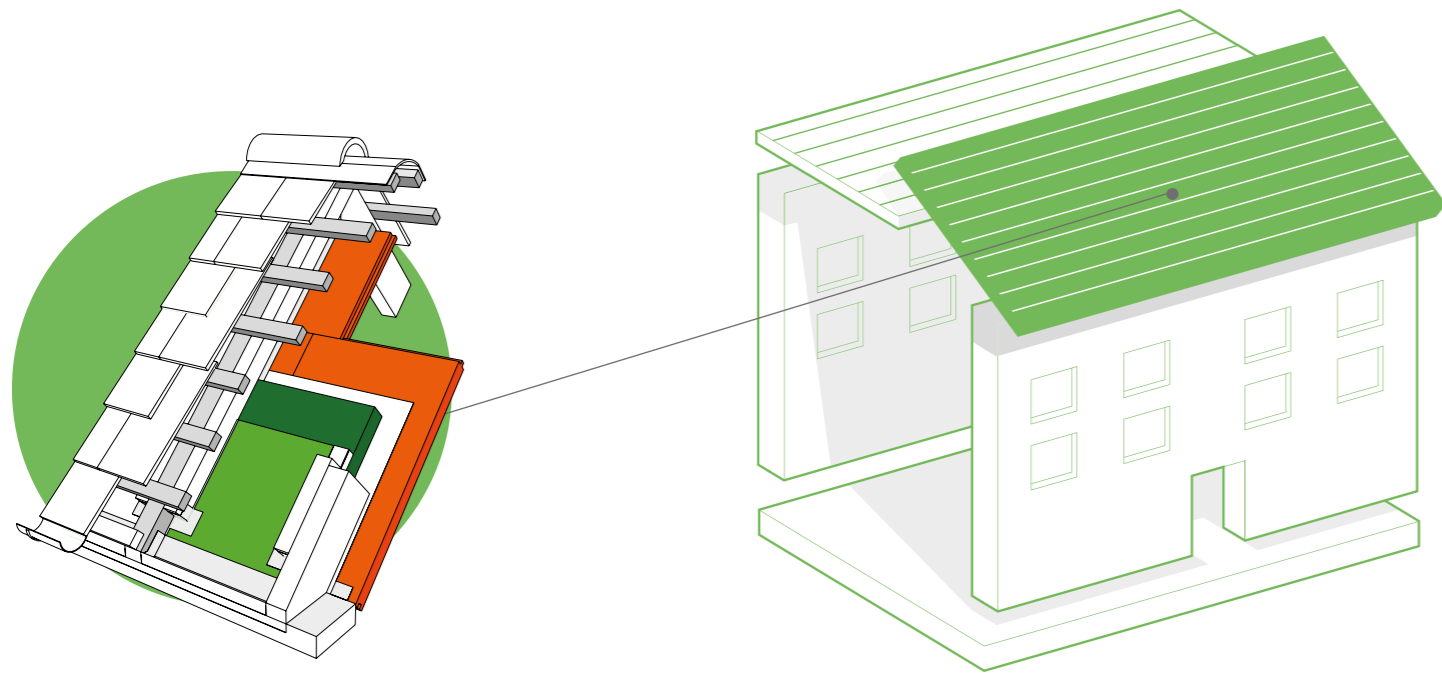


COMPONENTS & ACCESSORIES FOR PAVATEX EXTERNAL WALL INSULATION SYSTEM: CLAD



 <b>1</b> Isolair Multi	 <b>2</b> MQL-ST
 <b>3</b> Pavatape 150, External	 <b>4</b> Pavaprim Primer
 <b>5</b> ISO-Bloco 600 6-15	 <b>6</b> Reveal Board
 <b>7</b> Plinth board (XPS)	 <b>8</b> Details on request Pavatex compatible Plinth board render and sealing system

\* Please refer to the contents page of this pack to find more information about the range of Pavatex products



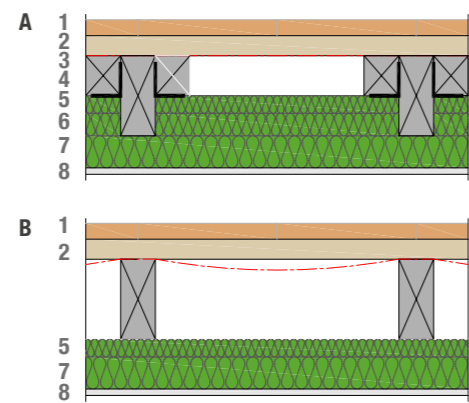
SYSTEM PERFORMANCE

u - values 0.30 – 0.10  
 y – values 0.05 – 0.02  
 airtightness 5 – 0.6 @50pa

The system complies with the most stringent of standards – from baseline building regulations through to Passivhaus. The system is suitable for most internal finishing options including lime plaster, clay plaster or plaster board finish.

CROSS-SECTION OF SYSTEM

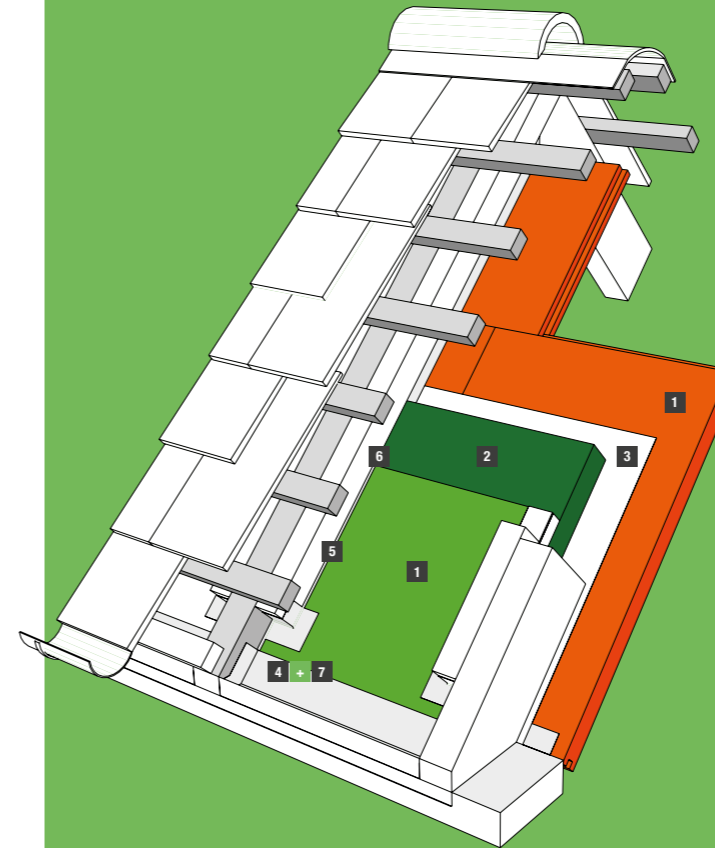
1. Existing tiles/slates
2. Existing non-breathable felt
3. New treated timber battens (min. 45mm height), fixed to existing rafters to create ventilation area
4. Pavatex system glue (to seal battens to rafters and woodfibre boards to battens)
5. Isolair Multi 30mm
6. PAVAFLEX between battens
7. Isolair Multi 30/40/60/80/100/120mm
8. a) Pavatex lime-based plaster system  
 b) Airtightness membrane; service void and plasterboard










HOW PAVATEX SYSTEMS COMPARE TO STANDARD BUILD

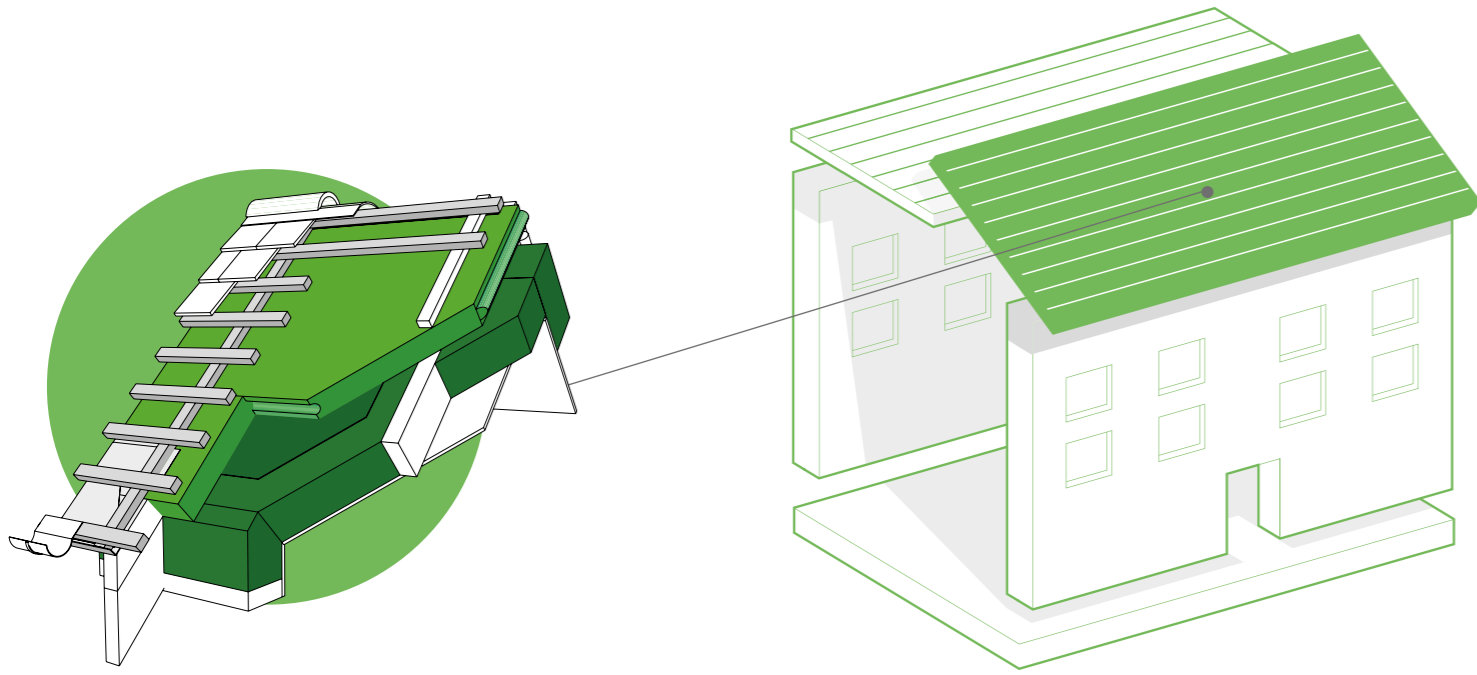


COMPONENTS & ACCESSORIES FOR PAVATEX SYSTEM FOR INTERNALLY FITTED ROOF: PITCHED



 1 Isolair Multi	 2 Pavaflex
 3 Pavatex Air tight membrane DB 3.5	 4 Pavatape 150
 5 Pavacoll adhesive	 6 Ejot VHTR 4.8
 7 Pavaprim primer	

\* Please refer to the contents page of this pack to find more information about the range of Pavatex products



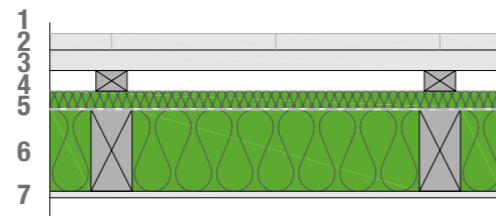
SYSTEM PERFORMANCE

u - values 0.30 – 0.10  
 y – values 0.05 – 0.02  
 airtightness 5 – 0.6 @50pa

The system complies with the most stringent of standards – from baseline building regulations through to Passivhaus. The system is suitable for most external finishing options including metal, clay or slate tiling etc.

CROSS-SECTION OF SYSTEM

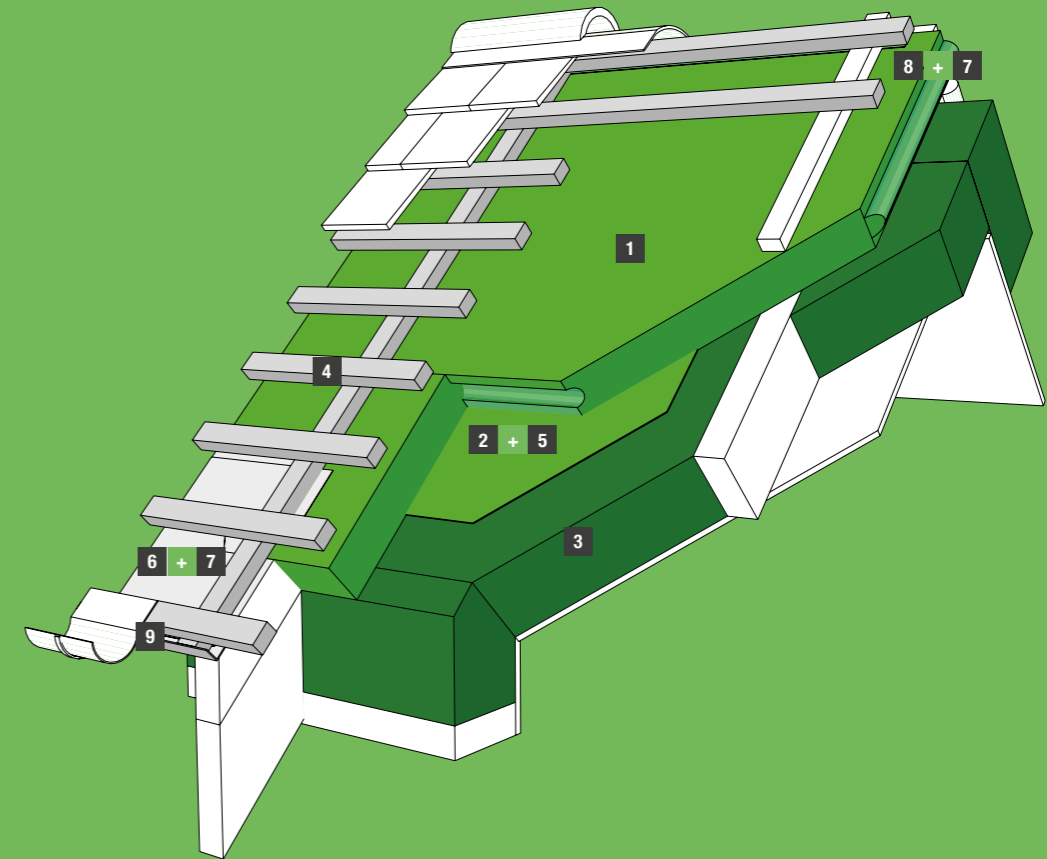
1. Existing/reclaimed/ new tiles/slates
2. Tile batten
3. New counter batten (min. 25 for ventilation).  
Please contact for metal roof.
4. Isolair Multi 30/40/60/80/100/120mm
5. Pavatex LDB 0.02 retrofit membrane
6. Pavaflex between existing rafter
7. Existing Plasterboard or similar finish


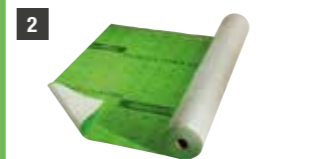


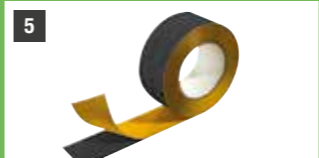
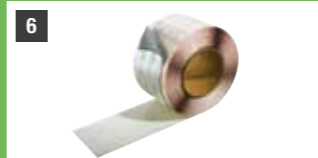


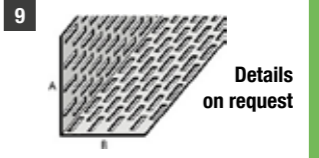
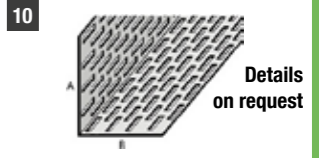


HOW PAVATEX SYSTEMS COMPARE TO STANDARD BUILD



COMPONENTS & ACCESSORIES FOR PAVATEX SYSTEM FOR EXTERNALLY FITTED ROOF: PITCHED



 <b>1</b> Isolair Multi	 <b>2</b> LDB 0.02 retrofit membrane	 <b>3</b> Pavaflex	 <b>4</b> Heco Topix
 <b>5</b> Pavafix tape	 <b>6</b> Pavatape 75	 <b>7</b> Pavaprim primer	 <b>8</b> Pavatape 150
 <b>9</b> Eaves Vents Details on request		 <b>10</b> Ridge Vent Details on request	

\* Please refer to the contents page of this pack to find more information about the range of Pavatex products



# pavatex

by **SOPREMA**

## **SOPREMA** at your service:

Do you have a question about a specific project, the products or Application possibilities? Then contact our technical team.

All information can be found on:  
**[www.soprema.co.uk](http://www.soprema.co.uk)**

## **SOPREMA UK**

SOPREMA House  
Freebournes Road  
Witham, Essex, CM8 3UN

Tel : 0330 058 0668  
[info@soprema.co.uk](mailto:info@soprema.co.uk)  
[www.soprema.co.uk](http://www.soprema.co.uk)



**SOPREMA** GROUP attaches great importance to quality and therefore operates in accordance with the internationally recognised, independently audited and certified quality system EN ISO 9001 - ISO 14001. **SOPREMA** GROUP reserves the right, depending on the evolution of knowledge and techniques, without notice to change the composition and terms of use of its products.