



**fibrolith**<sup>®</sup>  
by **SOPREMA**

*Natürlich Holzwolle*

# Product range acoustic

Acoustic boards for wall and ceiling cladding



# The Fibro-Kustik city trips

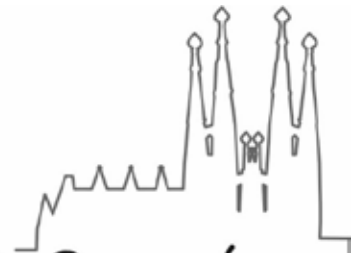
Fibro-Kustik produced with raw materials from regional suppliers

- easy installation
- creative design
- good sound absorption values of  $a_w$  up to 0,85



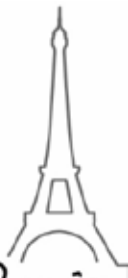
## Fibro-Kustik *Berlin*

flame retardant, B-s1, d0  
fine wood wool (approx. 2mm)



## Fibro-Kustik *Barcelona*

flame retardant, B-s1, d0  
superfine wood wool (approx. 1mm)



## Fibro-Kustik *Paris*

non flammable, A2-s1, d0  
fine wood wool (approx. 2mm)



## Fibro-Kustik *Florence*

non flammable, A2-s1, d0  
superfine wood wool (approx. 1mm)



World first!

All products are available with PURE GENIUS coating for an extra charge.

Indoor air cleaning for your health.

Additional information on page 3

## PURE GENIUS 1

**Fibro-Kustik boards with PURE GENIUS coating** Page 3

## Walls and ceilings - directly mounted 2

**Fibro-Kustik Berlin B1, fine wood wool** Page 4

**Fibro-Kustik Barcelona B1 , superfine wood wool**

**Fibro-Kustik Paris A2, fine wood wool**

**Fibro-Kustik Florence A2, superfine wood wool**

**Fibro-Acoustic-screws**



Page 5

Page 6

## Ceilings - for rail systems with inlay mounting 3

**Fibro-Kustik Berlin B1, fine wood wool**

Page 7

**Fibro-Kustik Barcelona B1 , superfine wood wool**

**Fibro-Kustik Paris A2, fine wood wool**

Page 8

**Fibro-Kustik Florence A2, superfine wood wool**



Page 9

## Walls and ceilings - ball impact resistant wall and ceiling claddings 4

### sport facilities and recreational buildings

**Fibro-Kustik Berlin B1, fine wood wool**

Page 10

**Fibro-Kustik Barcelona B1 , superfine wood wool**

**Fibro-Kustik Paris A2, fine wood wool**

Page 11

**Fibro-Kustik Florence A2, superfine wood wool**

**Fibro-Acoustic-screws**

Page 12



## Edge forms 5

**Special Edge processing, special sizes**

Page 13

## Glossary 6

Page 14-15

## Logistics 7

Page 16

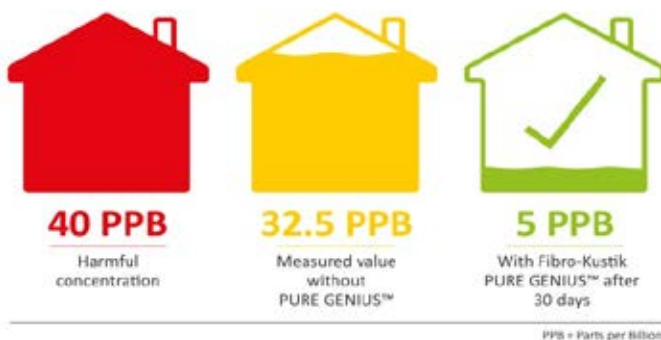
**Product range valid from May 2019.**



Sunlight, which shines through the window panes onto the ceiling - but also artificial light light from lamps - activates the air-purifying function of Fibro-Kustik PURE GENIUS boards. Harmful gases such as VOCs (e.g. formaldehyde) and Nox (e.g. vehicle exhaust fumes) are extracted from the room air. In addition, odours (e.g. cigarette smoke or cooking odours) can be reduced. The risk of microbial infestation is also significantly reduced. This ensures healthier indoor air.

### Indoor air up to 85% cleaner

Level of formaldehyde



The test procedure: ISO 22197-1

The air cleaning effect was demonstrated in a certified test to ISO 22197-1 standard in a photo-reactor developed by Professor Bahnemann of Leibnitz

All our products are available with PURE GENIUS coating for an extra charge.

**Fibro-Kustik Berlin B1**



**Fibro-Kustik Berlin**

Acoustic board WW according to DIN EN 13168, WW DI dm / WI dm  
 wood wool board,  
 flame retardant, B-s1, d0,  
**fine wood wool (approx. 2 mm)**

new item no.	old item no.	thickness in mm	weight /m <sup>2</sup>	standard-length in mm	standard-width in mm	R <sub>D</sub> m <sup>2</sup> -K/W	PU per Double pal.
20901 72 015 4200 00000	2316	15	12,3	1200	600	0,20	92,16 m <sup>2</sup>
20901 72 025 4200 00000	2325	25	14,3	1200	600	0,33	50,40 m <sup>2</sup>
20901 72 025 4100 00000	2326	25	14,3	1000	600	0,33	42,00 m <sup>2</sup>
20901 72 035 4200 00000	2335	35	18,9	1200	600	0,47	40,32 m <sup>2</sup>
20901 72 035 4100 00000	2336	35	18,9	1000	600	0,47	33,60 m <sup>2</sup>
20901 72 050 4200 00000	2350	50	26,7	1200	600	0,67	28,80 m <sup>2</sup>
20901 72 050 4100 00000	2351	50	26,7	1000	600	0,67	24,00 m <sup>2</sup>

**Fibro-Kustik Barcelona B1**



**Fibro-Kustik Barcelona**

Acoustic board WW according to DIN EN 13168, WW DI dm / WI dm  
 wood wool board,  
 flame retardant, B-s1, d0,  
**superfine wood wool (approx. 1mm)**

new item no.	old item no.	thickness in mm	weight /m <sup>2</sup>	standard-length in mm	standard-width in mm	R <sub>D</sub> m <sup>2</sup> -K/W	PU per Double pal.
20901 71 015 4200 00000	2317	15	12,3	1200	600	0,20	92,16 m <sup>2</sup>
20901 71 025 4200 00000	2327	25	14,3	1200	600	0,33	50,40 m <sup>2</sup>
20901 71 025 4100 00000	2328	25	14,3	1000	600	0,33	42,00 m <sup>2</sup>
20901 71 035 4200 00000	2337	35	18,9	1200	600	0,47	40,32 m <sup>2</sup>
20901 71 035 4100 00000	2338	35	18,9	1000	600	0,47	33,60 m <sup>2</sup>
20901 71 050 4200 00000	2357	50	26,7	1200	600	0,67	28,80 m <sup>2</sup>
20901 71 050 4100 00000	2358	50	26,7	1000	600	0,67	24,00 m <sup>2</sup>

**For additional charge:**

- small beveled edge (approx. 5 mm) / large beveled edge (approx. 11 mm)
- rabbit edge > 35 mm board thickness
- white painted on one side, RAL9010, indoor use
- other colours on request

PU in pieces:	15 mm	= 128 boards	standard size of pallets
	25 mm	= 70 boards	1200x1200 mm, Height approx. 1000 mm
	35 mm	= 56 boards	1000x1200 mm, Height approx. 1000 mm
	50 mm	= 40 boards	

**Fibro-Kustik Paris A2**



Acoustic board WW according to DIN EN 13168, WW DI dm / WI dm  
 wood wool board,  
 non flammable, A2-s1, d0,  
**fine wood wool (approx. 2 mm)**

new item no.	thickness in mm	weight /m <sup>2</sup>	standard- length in mm	standard- width in mm	R <sub>D</sub> m <sup>2</sup> -K/W	PU per Double pal.
25901 72 015 4200 00000	15	12,3	1200	600	0,20	92,16 m <sup>2</sup>
25901 72 025 4200 00000	25	14,3	1200	600	0,33	50,40 m <sup>2</sup>
25901 72 025 4100 00000	25	14,3	1000	600	0,33	42,00 m <sup>2</sup>

**Fibro-Kustik Florence A2**



Acoustic board WW according to DIN EN 13168, WW DI dm / WI dm  
 wood wool board,  
 non flammable, A2-s1, d0,  
**superfine wood wool (approx. 1mm)**

new item no.	thickness in mm	weight /m <sup>2</sup>	standard- length in mm	standard- width in mm	R <sub>D</sub> m <sup>2</sup> -K/W	PU per Double pal.
25901 71 015 4200 00000	15	12,3	1200	600	0,20	92,16 m <sup>2</sup>
25901 71 025 4200 00000	25	14,3	1200	600	0,33	50,40 m <sup>2</sup>
25901 71 025 4100 00000	25	14,3	1000	600	0,33	42,00 m <sup>2</sup>

**For additional charge:**

- small beveled edge (approx. 5 mm) / large beveled edge (approx. 11 mm) ab 25 mm thickness
- rabbit edge > 35 mm boardsthickness
- white painted on one side, RAL9010, indoor use
- other colours on request

PU in pieces:	15 mm	= 128 boards	standard size of pallets
	25 mm	= 70 boards	1200x1200 mm, Height approx. 1000 mm
	35 mm	= 56 boards	1000x1200 mm, Height approx. 1000 mm
	50 mm	= 40 boards	

**Fibro-Acoustic-screws**



Rust protected drywall screws for fastening Fibro-Kustik boards onto wooden slat sub-construction. The heads are either white or light beige-coloured.

new item no.	old item no.	for boards		screw		Colour	Content Pieces
		Thickness in mm		length			
808502	8502	25	mm	45	mm	light beige-coloured	250
808503	8503	25	mm	45	mm	white	250
808602	8602	35	mm	65	mm	light beige-coloured	250
808603	8603	35	mm	65	mm	white	250
808702	8702	50	mm	85	mm	light beige-coloured	250
808703	8703	50	mm	85	mm	white	250

For example: **"Tetris"**  
 Ceiling in a kindergarten  
 Fibro-Kustik boards,  
 fine wood wool,  
 white painted with



**Fibro-Kustik Berlin B1****Fibro-Kustik Berlin**

Acoustic board WW according to DIN EN 13168, WW DI dm / WI dm  
wood wool board,  
flame retardant, B-s1, d0,  
**fine wood wool (approx. 2 mm)**

new item no.	old item no.	thickness in mm	weight /m <sup>2</sup>	standard-length in mm	standard-width in mm	R <sub>D</sub> m <sup>2</sup> -K/W	PU per Double pal.
20901 72 015 4200 00000	2316	15	12,3	1200	600	0,20	92,16 m <sup>2</sup>
20901 72 025 4200 00000	2325	25	14,3	1200	600	0,33	50,40 m <sup>2</sup>
20901 72 025 4100 00000	2326	25	14,3	1000	600	0,33	42,00 m <sup>2</sup>
20901 72 035 4200 00000	2335	35	18,9	1200	600	0,47	40,32 m <sup>2</sup>
20901 72 035 4100 00000	2336	35	18,9	1000	600	0,47	33,60 m <sup>2</sup>
20901 72 050 4200 00000	2350	50	26,7	1200	600	0,67	28,80 m <sup>2</sup>
20901 72 050 4100 00000	2351	50	26,7	1000	600	0,67	24,00 m <sup>2</sup>

**Fibro-Kustik Barcelona B1****Fibro-Kustik Barcelona**

Acoustic board WW according to DIN EN 13168, WW DI dm / WI dm  
wood wool board,  
flame retardant, B-s1, d0,  
**superfine wood wool (approx. 1mm)**

new item no.	old item no.	thickness in mm	weight /m <sup>2</sup>	standard-length in mm	standard-width in mm	R <sub>D</sub> m <sup>2</sup> -K/W	PU per Double pal.
20901 71 015 4200 00000	2317	15	12,3	1200	600	0,20	92,16 m <sup>2</sup>
20901 71 025 4200 00000	2327	25	14,3	1200	600	0,33	50,40 m <sup>2</sup>
20901 71 025 4100 00000	2328	25	14,3	1000	600	0,33	42,00 m <sup>2</sup>
20901 71 035 4200 00000	2337	35	18,9	1200	600	0,47	40,32 m <sup>2</sup>
20901 71 035 4100 00000	2338	35	18,9	1000	600	0,47	33,60 m <sup>2</sup>
20901 71 050 4200 00000	2357	50	26,7	1200	600	0,67	28,80 m <sup>2</sup>
20901 71 050 4100 00000	2358	50	26,7	1000	600	0,67	24,00 m <sup>2</sup>

**For additional charge:**

small beveled edge (approx. 5 mm) / large beveled edge (approx. 11 mm)

rabbit edge > 35 mm board thickness

white painted on one side, RAL9010, indoor use

other colours on request

PU in pieces:	15 mm	= 128 boards	standard size of pallets
	25 mm	= 70 boards	1200x1200 mm, Height approx. 1000 mm
	35 mm	= 56 boards	1000x1200 mm, Height approx. 1000 mm
	50 mm	= 40 boards	



**Fibro-Kustik Paris A2**



**Fibro-Kustik Paris**

Acoustic board WW according to DIN EN 13168, WW DI dm / WI dm  
 wood wool board,  
 non flammable, A2-s1, d0,  
**fine wood wool (approx. 2 mm)**

new item no.	thickness in mm	weight /m <sup>2</sup>	standard-length in mm	standard-width in mm	R <sub>D</sub> m <sup>2</sup> -K/W	PU per Double pal.
25901 72 015 4200 00000	15	12,3	1200	600	0,20	92,16 m <sup>2</sup>
25901 72 025 4200 00000	25	14,3	1200	600	0,33	50,40 m <sup>2</sup>
25901 72 025 4100 00000	25	14,3	1000	600	0,33	42,00 m <sup>2</sup>

**Fibro-Kustik Florence A2**



**Fibro-Kustik Florence**

Acoustic board WW according to DIN EN 13168, WW DI dm / WI dm  
 wood wool board,  
 non flammable, A2-s1, d0,  
**superfine wood wool (approx. 1mm)**

new item no.	thickness in mm	weight /m <sup>2</sup>	standard-length in mm	standard-width in mm	R <sub>D</sub> m <sup>2</sup> -K/W	PU per Double pal.
25901 71 015 4200 00000	15	12,3	1200	600	0,20	92,16 m <sup>2</sup>
25901 71 025 4200 00000	25	14,3	1200	600	0,33	50,40 m <sup>2</sup>
25901 71 025 4100 00000	25	14,3	1000	600	0,33	42,00 m <sup>2</sup>

**For additional charge:**

- small beveled edge (approx. 5 mm) / large beveled edge (approx. 11 mm) ab 25 mm thickness
- rabbit edge > 35 mm board thickness
- white painted on one side, RAL9010, indoor use
- other colours on request

PU in pieces:	15 mm	= 128 boards	standard size of pallets
	25 mm	= 70 boards	1200x1200 mm, Height approx. 1000 mm
	35 mm	= 56 boards	1000x1200 mm, Height approx. 1000 mm
	50 mm	= 40 boards	

Fibro-Express-nail



new item no.	old item	for L-Profile	nail-length	Content Pieces
807200	7200	6/60	60 mm	100



Practical examples  
bowling alley

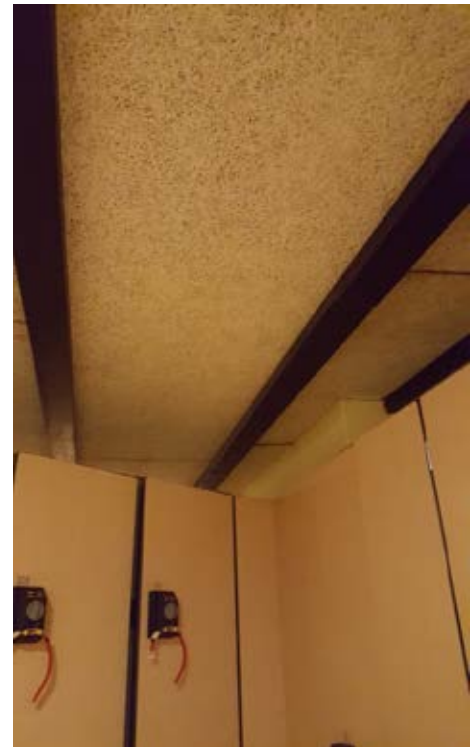
Walls:  
Fibro-Kustik boards  
nature,  
size 2400x600 mm, with  
large beveled edges

Ceiling:  
Fibro-Kustik boards  
white painted,  
size 1200x600 mm,  
in a rail-system



Practical example:  
Swimming pool, Sauna,  
Wellness, Fitness- and  
sports facility

Ceiling: Fibro-Kustik  
boards, white painted  
between wooden slabs



**Fibro-Kustik Berlin B1**



**Fibro-Kustik Berlin**

Acoustic board WW according to DIN EN 13168, WW DI dm / WI dm  
 wood wool board,  
 flame retardant, B-s1, d0,  
**fine wood wool (approx. 2 mm)**

new item no.	old item no.	thickness in mm	weight /m <sup>2</sup>	standard-length in mm	standard-width in mm	R <sub>D</sub> m <sup>2</sup> -K/W	PU per Double pal.
20901 72 025 4200 00000	2325	25	14,3	1200	600	0,33	50,40 m <sup>2</sup>
20901 72 025 4100 00000	2326	25	14,3	1000	600	0,33	42,00 m <sup>2</sup>
20901 72 035 4200 00000	2335	35	18,9	1200	600	0,47	40,32 m <sup>2</sup>
20901 72 035 4100 00000	2336	35	18,9	1000	600	0,47	33,60 m <sup>2</sup>
20901 72 050 4200 00000	2350	50	26,7	1200	600	0,67	28,80 m <sup>2</sup>
20901 72 050 4100 00000	2351	50	26,7	1000	600	0,67	24,00 m <sup>2</sup>

**Fibro-Kustik Barcelona B1**



**Fibro-Kustik Barcelona**

Acoustic board WW according to DIN EN 13168, WW DI dm / WI dm  
 wood wool board,  
 flame retardant, B-s1, d0,  
**superfine wood wool (approx. 1mm)**

new item no.	old item no.	thickness in mm	weight /m <sup>2</sup>	standard-length in mm	standard-width in mm	R <sub>D</sub> m <sup>2</sup> -K/W	PU per Double pal.
20901 71 025 4200 00000	2327	25	14,3	1200	600	0,33	50,40 m <sup>2</sup>
20901 71 025 4100 00000	2328	25	14,3	1000	600	0,33	42,00 m <sup>2</sup>
20901 71 035 4200 00000	2337	35	18,9	1200	600	0,47	40,32 m <sup>2</sup>
20901 71 035 4100 00000	2338	35	18,9	1000	600	0,47	33,60 m <sup>2</sup>
20901 71 050 4200 00000	2357	50	26,7	1200	600	0,67	28,80 m <sup>2</sup>
20901 71 050 4100 00000	2358	50	26,7	1000	600	0,67	24,00 m <sup>2</sup>

**For additional charge:**

- small beveled edge (approx. 5 mm) / large beveled edge (approx. 11 mm)
- rabbit edge > 35 mm board thickness
- white painted on one side, RAL9010, indoor use
- other colours on request

PU in pieces:	15 mm	= 128 boards	standard size of pallets
	25 mm	= 70 boards	1200x1200 mm, Height approx. 1000 mm
	35 mm	= 56 boards	1000x1200 mm, Height approx. 1000 mm
	50 mm	= 40 boards	

## Fibro-Kustik Paris A2



Acoustic board WW according to DIN EN 13168, WW DI dm / WI dm  
wood wool board,  
non flammable, A2-s1, d0,  
**fine wood wool (approx. 2 mm)**

new item no.	thickness in mm	weight /m <sup>2</sup>	standard- length in mm	standard- width in mm	R <sub>D</sub> m <sup>2</sup> -K/W	PU per Double pal.
25901 72 025 4200 00000	25	14,3	1200	600	0,33	50,40 m <sup>2</sup>
25901 72 025 4100 00000	25	14,3	1000	600	0,33	42,00 m <sup>2</sup>

## Fibro-Kustik Florence A2



Acoustic board WW according to DIN EN 13168, WW DI dm / WI dm  
wood wool board,  
non flammable, A2-s1, d0,  
**superfine wood wool (approx. 1mm)**

new item no.	thickness in mm	weight /m <sup>2</sup>	standard- length in mm	standard- width in mm	R <sub>D</sub> m <sup>2</sup> -K/W	PU per Double pal.
25901 71 025 4200 00000	25	14,3	1200	600	0,33	50,40 m <sup>2</sup>
25901 71 025 4100 00000	25	14,3	1000	600	0,33	42,00 m <sup>2</sup>

### For additional charge:

small beveled edge (approx. 5 mm) / large beveled edge (approx. 11 mm) ab 25 mm thickness

rabbet edge > 35 mm board thickness

white painted on one side, RAL9010, indoor use

other colours on request

PU in pieces:	15 mm	= 128 boards	standard size of pallets
	25 mm	= 70 boards	1200x1200 mm, Height approx. 1000 mm
	35 mm	= 56 boards	1000x1200 mm, Height approx. 1000 mm
	50 mm	= 40 boards	

**Fibro-Acoustic-screws**



Rust protected drywall screws for fastening Fibro-Kustik boards onto wooden slat sub-construction. The heads are either white or light beige-coloured.







new item no.	old item no.	for boards Thickness in mm	screws length	Colour	Content Pieces
808502	8502	25 mm	45 mm	light beige-coloured	250
808503	8503	25 mm	45 mm	white	250
808602	8602	35 mm	65 mm	light beige-coloured	250
808603	8603	35 mm	65 mm	white	250
808702	8702	50 mm	85 mm	light beige-coloured	250
808703	8703	50 mm	85 mm	white	250

The materials testing Institute University of Stuttgart (MPA) confirms that Fibro-Kustik boards with a thickness > 25 mm are ball impact resistant.

Test reports: wall: 903 1238 000-1/MAN/H, MPA Stuttgart, Ceiling: 903 1238 000-1/MAN/H, MPA Stuttgart

Picture: test assembly



Schema	German	Englisch	Description	board size	available for thickness
	GKANTE	Edge SE	straight edge	1200x600	≥ 15 mm
				600x600	
	FASE05	BE5	small beveled edge 5mm	1200x600	≥ 15 mm
				600x600	
	FASE11	BE11	large beveled edge 11mm	1200x600	≥ 15 mm
				600x600	
	FUGE05	SEAM05	straight edge with rabbet edge 5 on all visible sides	1200x600	≥ 15 mm
				600x600	
	GK-EIN	SEINLAY	straight edges for inlay mounting	1200x600	≥ 15 mm
				600x600	
	SF-EIN	SEAM24	straight edge with rabbet edge 24 on the visible side	1200x600	≥ 25 mm
				600x600	
	SF-EIN05	REB5	rabbet edges on 2 sides, beveled edges on all 4 visible sides	1200x600	≥ 25 mm
				600x600	
	VF05	EB5N	notch on two sides and beveled edge on 4 visible sides	1200x600	≥ 35 mm
				600x600	
	Falz	RES	rabbet edge on 4 sides	1200x600	≥ 35 mm
				600x600	

## The European standards

Table 1 Areas of application of heat insulation set forth in DIN V 4108-10:2003

Area of Application		Examples of Applications	Abbreviation
Ceiling, roof		Exterior insulation of roof or ceiling, weather protection, insulation under	DAD
		Exterior insulation of roof or ceiling, weather protection, insulation under sealants	DAA
		Exterior roofing insulation exposed to weather (inverted roof)	DUK
		Intermediary insulation of a double layer roof, not walkable, but accessible upper floor ceiling	DZ
		Interior insulation of the ceiling (beneath) or of the roof, insulation under beams / structural members, suspended ceiling, etc.	DI
		Interior insulation of the ceiling or the floor board (top) under the screed without sound-proofing requirements	DEO
		Interior insulation of the ceiling or the floor board (top) under the screed with sound proofing requirements	DES
Wall		Exterior insulation of the wall behind the façade	WAB
		Exterior insulation of the wall behind the wall sealant	WAA
		Exterior insulation of the wall underneath plaster	WAP
		Insulation of double layer walls, core insulation	WZ
		Insulation of wood frames and wood frame buildings	WH
		Interior wall insulation	WI
		Insulation between house partition walls with sound-proofing requirements	WTH
		Insulation of room partition walls	WTR

Table 2 Differentiation of certain product properties from DIN V 4108-10:2003

### Supplemental identification for product properties and examples (excerpt)

dk	No compression strength	Insulation of hollow spaces, insulation between	dk
dg	Low compression strength	Living area and office area under screed	dg
dm	Medium compression strength	An unused insulated roof	dm
dh	High compression strength	Used roof surfaces, terraces	dh

Deliveries to warehouse addresses do not include unloading.  
Unloading is performed by the recipient via forklift or a wheel loader from the side.

In the case of deliveries to construction sites, if nothing different was ordered, the goods are loaded onto the vehicle in such a way that the construction site crane can perform unloading.

For unloading, a time window of 2 hours shall be available. From the 3rd hour on, the downtime will be charged at a rate of EUR 80.00 for every hour begun.

Our freight forwarders have semitrailers and articulated trains available. Exterior height max. 4.10 m.











For further information and contact persons for your individual questions and requests, please visit [www.fibrolith.de/en](http://www.fibrolith.de/en)

11.2019

**Fibrolith Dämmstoffe GmbH**

An der L83

D-56746 Kempenich

Phone: +49 (0) 26 55 / 95 92-0

Fax: +49 (0) 26 55 / 95 92-18

E-Mail: [info@fibrolith.de](mailto:info@fibrolith.de)

